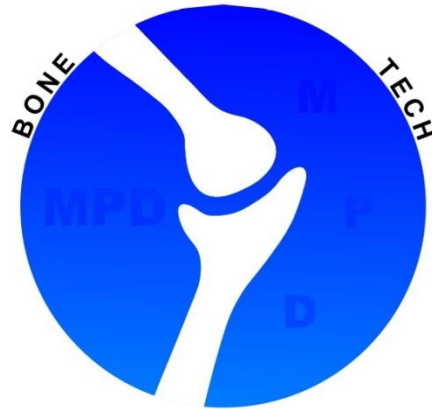




Bone Tech Co.Ltd
Medical Instrument Co.



Mobtakeran Parsian Darman Co.Ltd.
(BONE TECH)
Medical Implants and Instrument Co.



Bone Tech Co.Ltd
Medical Instrument Co.

In The Name of God



Mobtakeran Parsian Darman Co.Ltd. (BONE TECH)

Is a specialized enterprise integrating , developing , producing , and marketing Orthopaedics , Spine , Maxillofacial and Dental , as well as Surgical instruments , especially Orthopaedics.

The trade mark of the products is registered as <<BONE TECH>> .

The Bone Tech company seriously sticks out to the guiding ideology of centering around science and technology , takes market as guiding orientation , takes meeting demands as its own duty and searches for sustainable development strategy of scientific innovation , keeping its promise to the customers and satisfying the customers needs with high quality products as well as science and perfect service.

The leading products of the company involve all kind of internal and external fixation system for Spine, Orthopaedics and Maxillofacial and in a near future; Bone Tech will develop Knee and Hip prosthesis system.

With great aspiration Bone Tech will carry on the spirit of seeking high quality , high efficiency and constant development and innovation and is ready to cooperate with both domestic and overseas businessmen for the expanding of the business relationships and exchange of technology and ideas to serve and benefit the mankind.

Managing Director
Gil Amirroodi Abazar



SCREWS	9
CORTEX SCREWS 3.5MM	10
CORTEX SCREWS 4.5MM	11
CANCELLOUS SCREWS 4.0MM	12
CANCELLOUS SCREWS 6.5MM	13
MALLEOLAR SCREWS 4.5MM	14
CANNULATED SCREWS 3.5MM- SELF TAPPING	15
CANNULATED SCREWS 4.0 MM-SELF TAPPING	16
CANNULATED SCREWS 6.5 MM-SELF TAPPING	17
CANNULATED SCREWS 7.3MM SELF TAPPING.....	18
PELVIC LAG SCREWS 3.5 MM	19
PELVIC LAG SCREWS 6.5 MM	20
LOCKING SCREWS 2.7MM SELF-TAPPING	21
LOCKING SCREWS 3.5MM SELF-TAPPING	22
LOCKING SCREWS 5.0MM SELF TAPPING.....	23
LOCKING OSTEOTOMY SCREWS 6.4 MM	24
LOCKING CANCELLOUS SCREWS 4.0MM SELF TAPPING	25
LOCKING CANCELLOUS SCREWS 5.0MM- SELF TAPPING	26
LOCKING CANNULATED SCREWS 6.5 MM SELF TAPPING	27
DHS/DCS COMPRESSION SCREWS.....	28
SPACER	28
DHS/DCS NAIL SCREWS	29
DOUBLE THREAD CANNULATED COMPRESSION TITANIUM SCREWS	29
HEADLESS CANNULATED COMPRESSION TITANIUM SCREWS 3.5 MM	30
HEADLESS CANNULATED COMPRESSION TITANIUM SCREWS 5.0 MM	31
INTERFERENCE SCREWS	32
SUTURE ANCHORS.....	32
ENDO BUTTON	33
NAILS	34
LOCKING BOLT SCREWS 3.9MM	35
LOCKING BOLT SCREWS 4.7MM	35
LOCKING BOLT SCREWS 4.9MM	36
CANNULATED TIBIAL NAIL.....	37
CANNULATED FEMORAL NAIL	38
CANNULATED EXPERT TIBIAL NAIL	39
CANNULATED EXPERT FEMORAL NAIL	40
CANNULATED HUMERAL NAIL-EX	41
TITANIUM CANNULATED TROCHANTERIC FIXATION NAIL (SHORT NAIL).....	42
CANNULATED PFNA NAIL.....	43
ANKLE FUSION NAIL	44
TITANIUM CANNULATED TROCHANTERIC FIXATION NAIL (LONG NAIL)	45
TITANIUM CANNULATED TROCHANTERIC FIXATION NAIL (LONG NAIL)	46
PFNA LAG SCREWS 10.4 MM	47
ANTIROTATION SCREWS 6.5 MM	47
TROCHANTERIC FIXATION NAIL SCREWS.....	47
ELASTIC NAILS (T.E.N).....	48
RUSH NAIL.....	48
FEMORAL & TIBIAL END CAP	49
PFNA LOCKING END CAP.....	49
PFNA DYNAMIC END CAP	49



ANKLE FUSION NAIL END CAP	49
PLATE.....	50
DCP PLATES 3.5MM	51
LC-DCP PLATES 3.5M	51
ONE-THIRD TUBULAR PLATES 3.5MM.....	52
SEMI-TUBULAR PLATES 3.5	52
RECONSTRUCTION PLATES 3.5MM	52
CURVED RECONSTRUCTION PLATES 3.5MM	53
T-PLATES 3.5 MM.....	53
T-PLATES 3.5 MM-TYPE II	53
DCP T-PLATES, OBLIQUE 3.5MM.....	54
SPOON PLATES.....	54
CALCANEAL DCP PLATES TYPE I	55
CALCANEAL PLATES 3.5 MM TYPE II	55
CALCANEAL PLATES 3.5 MM TYPE III	55
CLAVERLEAF PLATES	56
CALCANEAL Y PLATES 3.5 MM	56
SUPERIOR ANTERIOR CLAVICLE S PLATES 3.5M.....	57
CLAVICLE HOOK PLATES 3.5MM	57
BROAD DCP PLATES 4.5MM.....	58
NARROW DCP PLATES 4.5MM.....	58
LC-DCP BROAD PLATES 4.5MM	59
LC-DCP NARROW PLATES 4.5MM	59
RECONSTRUCTION PLATES 4.5MM	60
DHS PLATES STANDARD BARREL.....	60
DCS PLATES.....	60
T-PLATES 4.5MM	61
T-BUTTRESS PLATES 4.5MM	61
L-PLATES 4.5 MM	62
L-BUTTRESS PLATES 4.5MM R/L	62
LOCKING PLATES 3.5 MM	63
LOCKING ONE- THIRD TUBULAR PLATES 3.5MM	63
LOCKING RECONSTRUCTION PLATES 3.5MM.....	64
LOCKING CURVED RECONSTRUCTION PLATES 3.5MM.....	64
LOCKING LOW PROFILE RECONSTRUCTION PLATES 3.5MM.....	64
LOCKING T-PLATES 3.5 MM	65
LOCKING T-PLATES 3.5 MM - TYPE II	65
LOCKING T-PLATES, OBLIQUE 3.5MM	65
LOCKING CALCANEAL PLATES 3.5 MM TYPE I.....	66
LOCKING CALCANEAL PLATES 3.5 MM TYPE II.....	66
LOCKING CALCANEAL PLATES 3.5 MM TYPE III.....	66
LOCKING CLAVERLEAF PLATES	67
LOCKING CALCANEAL Y PLATES 3.5 MM.....	67
LOCKING STRAIGHT RECONSTRUCTION PLATES 4.5MM.....	67
LC-LCP NARROW PLATES 4.5MM.....	68
LC-LCP BROAD PLATES 4.5MM	68
LOCKING T-PLATES 4.5MM.....	69
LCP T-BUTTRESS PLATES 4.5MM.....	69
LCP L-PLATES 4.5MM R/L	70
LCP L-BUTTRESS PLATES 4.5MM R/L.....	70
LOCKING DHS PLATES, STANDARD BARREL	71
LOCKING DCS PLATES.....	71



LOCKING DISTAL RADIUS PLATES VOLAR 3.5 MM	72
LOCKING DISTAL RADIUS PLATES VOLAR 3.5 MM- TYPE II.....	72
LOCKING POSTEROLATERAL DISTAL HUMERUS PLATES 3.5MM.....	73
LOCKING EXTRA-ARTICULAR DISTAL HUMERUS PLATE 3.5MM.....	73
LOCKING MEDIAL DISTAL HUMERUS PLATES 3.5MM.....	74
LOCKING POSTEROLATERAL DISTAL HUMERUS PLATES 3.5MM WITH LATERAL SUPPORT	74
LOCKING DISTAL HUMERUS PLATES 3.5MM – DORSOLATERAL.....	74
LOCKING DISTAL FIBULA PLATES 3.5MM.....	75
LOCKING OLECRANON PLATES 3.5MM.....	75
LOCKING PROXIMAL HUMERUS PLATES 3.5MM TYPE I.....	76
LOCKING PROXIMAL HUMERUS PLATE 3.5 MM TYPE II	76
LOCKING SUPERIOR ANTERIOR CLAVICLE PLATES 3.5MM.....	77
LOCKING CLAVICLE HOOK PLATES 3.5MM.....	77
LOCKING MEDIAL DISTAL TIBIA PLATES 3.5MM	78
LOCKING ANTEROLATERAL DISTAL TIBIA PLATES 3.5MM.....	78
LOCKING LATERAL RECONSTRUCTION DISTAL TIBIA PLATES.....	79
LOCKING LATERAL DISTAL TIBIA PLATES 4.5MM.....	79
LOCKING PROXIMAL TIBIA PLATES 3.5MM	80
LOCKING MEDIAL PROXIMAL TIBIA PLATES 3.5 MM	80
LOCKING LATERAL PROXIMAL TIBIA PLATES 4.5 MM	81
LOCKING MEDIAL PROXIMAL TIBIA PLATES 4.5 MM	81
LOCKING DISTAL FEMUR PLATES 4.5 MM.....	82
LOCKING PROXIMAL FEMUR PLATES 4.5 MM TYPE I.....	82
LOCKING PROXIMAL FEMUR PLATES 4.5 MM TYPE II.....	82
PATELLA PLATES	83
LOCKING HIGH TIBIA OSTEOTOMY (HTO) PLATES 4.5 MM	83
LOCKING DISTAL FEMUR OSTEOTOMY PLATES 4.5 MM – TYPE I.....	83
LOCKING DISTAL FEMUR OSTEOTOMY PLATE 4.5 MM – TYPE II	83
LOCKING POSTERIOR WALL ACETABULAR PLATES 3.5 MM	84
LOCKING DISTAL CLAVICLE PLATES 3.5 MM.....	84
SPINAL SYSTEM.....	85
MONOAXIAL REDUCTION SCREWS SHORT ARM	86
POLYAXIAL REDUCTION SCREWS SHORT ARM	86
MONOAXIAL REDUCTION SCREWS LONG ARM	87
POLYAXIAL REDUCTION SCREWS LONG ARM.....	87
LAMINAR HOOK.....	88
SPINAL SET SCREW	88
SPINAL ROD 5.5 MM	88
CROSS LINK.....	88
MINIMALLY CANNULATED INVASIVE SPINAL SYSTEM – POLYAXIAL SCREW	89
MINIMALLY CANNULATED INVASIVE SPINAL SYSTEM – MONOAXIAL SCREW	89
ANTERIOR CERVICAL PLATE	90
CERVICAL FIXED SCREW.....	90
CERVICAL MODIFIED SCREW.....	90
CERVICAL POLYAXIAL PEDICLE SCREW.....	91
CERVICAL TRANSVERSE CONNECTOR	91
CERVICAL ROD 3.5 MM.....	91
CERVICAL SET SCREW.....	91
ANTERIOR CERVICAL CAGE	92
POSTERIOR/LATERAL LUMBAR CAGE – TLIF	92
POSTERIOR/LATERAL LUMBAR CAGE – PLIF.....	92



EXTERNAL FIXATION	93
WASHERS	94
SPIKED WASHERS (TOOTHED WASHERS)	94
SINGLE ADJUSTABLE CLAMP	94
UNIVERSAL JOINT FOR TWO TUBES	94
MINI CLAMP	94
OPEN CLAMP	94
EXTERNAL ROD 4.0 MM	95
EXTERNAL ROD 11.0 MM	95
DRILL BITS, FOR JACOBS CHUCK.....	96
DRILL BITS, QUICK COUPLING.....	96
DRILL BITS	97
CANNULATED DRILL BITS	98
GUIDE PIN.....	98
PIN.....	99
SCHANZ SCREWS.....	100
STAPLE.....	101
BINDING WIRE	101
CABLE SYSTEM	102
POSITIONING PIN WITH THREAD	103
CERCLAGE POSITIONING PIN.....	103
POSITIONING PIN - CRUCIFORM	103
CERCLAGE EYE	103
CERCLAGE FIX.....	103
CERCLAGE CABLE WIRE WITH CRIMP	103
MAXILLOFACIAL SYSTEM	104
ORBITAL RIM PLATES (WITHOUT BAR)	105
ADAPTION (STRAIGHT WITHOUT BAR) PLATES.....	105
Y-PLATES.....	105
DOUBLE-Y-PLATES	105
FRAME PLATES	106
X-PLATES.....	106
RECTANGULAR ROUND HOLE PLATES	106
RECTANGULAR SQUARE HOLE PLATES	106
L-PLATES.....	107
T-PLATES.....	107
H-PLATES	107
CRANIAL PLATE (BURR HOLE COVERS)	108
FLAT RECONSTRUCTION MESH (RIGID & MALLEABLE).....	108
MINI SCREWS SELF TAPPING – SELF DRILLING.....	108
CERTIFICATE.....	109



Bone Tech Co.Ltd
Medical Instrument Co.



Bone Tech Co.Ltd
Medical Instrument Co.

Section 1

Screws



Cortex Screws 3.5mm

Size (mm)	Stainless steel	Stainless steel	Titanium	Titanium
	Standard	Self-Tapping	Standard	Self-Tapping
10	BT-101-10	BT-102-10	BTT-101-10	BTT-102-10
12	BT-101-12	BT-102-12	BTT-101-12	BTT-102-12
14	BT-101-14	BT-102-14	BTT-101-14	BTT-102-14
16	BT-101-16	BT-102-16	BTT-101-16	BTT-102-16
18	BT-101-18	BT-102-18	BTT-101-18	BTT-102-18
20	BT-101-20	BT-102-20	BTT-101-20	BTT-102-20
22	BT-101-22	BT-102-22	BTT-101-22	BTT-102-22
24	BT-101-24	BT-102-24	BTT-101-24	BTT-102-24
26	BT-101-26	BT-102-26	BTT-101-26	BTT-102-26
28	BT-101-28	BT-102-28	BTT-101-28	BTT-102-28
30	BT-101-30	BT-102-30	BTT-101-30	BTT-102-30
32	BT-101-32	BT-102-32	BTT-101-32	BTT-102-32
34	BT-101-34	BT-102-34	BTT-101-34	BTT-102-34
36	BT-101-36	BT-102-36	BTT-101-36	BTT-102-36
38	BT-101-38	BT-102-38	BTT-101-38	BTT-102-38
40	BT-101-40	BT-102-40	BTT-101-40	BTT-102-40
42	BT-101-42	BT-102-42	BTT-101-42	BTT-102-42
44	BT-101-44	BT-102-44	BTT-101-44	BTT-102-44
46	BT-101-46	BT-102-46	BTT-101-46	BTT-102-46
48	BT-101-48	BT-102-48	BTT-101-48	BTT-102-48
50	BT-101-50	BT-102-50	BTT-101-50	BTT-102-50
55	BT-101-55	BT-102-55	BTT-101-55	BTT-102-55
60	BT-101-60	BT-102-60	BTT-101-60	BTT-102-60
65	BT-101-65	BT-102-65	BTT-101-65	BTT-102-65
70	BT-101-70	BT-102-70	BTT-101-70	BTT-102-70
75	BT-101-75	BT-102-75	BTT-101-75	BTT-102-75
80	BT-101-80	BT-102-80	BTT-101-80	BTT-102-80
85	BT-101-85	BT-102-85	BTT-101-85	BTT-102-85
90	BT-101-90	BT-102-90	BTT-101-90	BTT-102-90
95	BT-101-95	BT-102-95	BTT-101-95	BTT-102-95
100	BT-101-100	BT-102-100	BTT-101-100	BTT-102-100
105	BT-101-105	BT-102-105	BTT-101-105	BTT-102-105
110	BT-101-110	BT-102-110	BTT-101-110	BTT-102-110





Cortex Screws 4.5mm

Size (mm)	Stainless steel		Titanium	
	Standard	Self-Tapping	Standard	Self-Tapping
14	BT-103-14	BT-104-14	BTT-103-14	BTT-104-14
16	BT-103-16	BT-104-16	BTT-103-16	BTT-104-16
18	BT-103-18	BT-104-18	BTT-103-18	BTT-104-18
20	BT-103-20	BT-104-20	BTT-103-20	BTT-104-20
22	BT-103-22	BT-104-22	BTT-103-22	BTT-104-22
24	BT-103-24	BT-104-24	BTT-103-24	BTT-104-24
26	BT-103-26	BT-104-26	BTT-103-26	BTT-104-26
28	BT-103-28	BT-104-28	BTT-103-28	BTT-104-28
30	BT-103-30	BT-104-30	BTT-103-30	BTT-104-30
32	BT-103-32	BT-104-32	BTT-103-32	BTT-104-32
34	BT-103-34	BT-104-34	BTT-103-34	BTT-104-34
36	BT-103-36	BT-104-36	BTT-103-36	BTT-104-36
38	BT-103-38	BT-104-38	BTT-103-38	BTT-104-38
40	BT-103-40	BT-104-40	BTT-103-40	BTT-104-40
42	BT-103-42	BT-104-42	BTT-103-42	BTT-104-42
44	BT-103-44	BT-104-44	BTT-103-44	BTT-104-44
46	BT-103-46	BT-104-46	BTT-103-46	BTT-104-46
48	BT-103-48	BT-104-48	BTT-103-48	BTT-104-48
50	BT-103-50	BT-104-50	BTT-103-50	BTT-104-50
52	BT-103-52	BT-104-52	BTT-103-52	BTT-104-52
54	BT-103-54	BT-104-54	BTT-103-54	BTT-104-54
56	BT-103-56	BT-104-56	BTT-103-56	BTT-104-56
58	BT-103-58	BT-104-58	BTT-103-58	BTT-104-58
60	BT-103-60	BT-104-60	BTT-103-60	BTT-104-60
65	BT-103-65	BT-104-65	BTT-103-65	BTT-104-65
70	BT-103-70	BT-104-70	BTT-103-70	BTT-104-70
75	BT-103-75	BT-104-75	BTT-103-75	BTT-104-75
80	BT-103-80	BT-104-80	BTT-103-80	BTT-104-80
85	BT-103-85	BT-104-85	BTT-103-85	BTT-104-85
90	BT-103-90	BT-104-90	BTT-103-90	BTT-104-90
95	BT-103-95	BT-104-95	BTT-103-95	BTT-104-95
100	BT-103-100	BT-104-100	BTT-103-100	BTT-104-100
105	BT-103-105	BT-104-105	BTT-103-105	BTT-104-105
110	BT-103-110	BT-104-110	BTT-103-110	BTT-104-110
115	BT-103-115	BT-104-115	BTT-103-115	BTT-104-115
120	BT-103-120	BT-104-120	BTT-103-120	BTT-104-120
125	BT-103-125	BT-104-125	BTT-103-125	BTT-104-125
130	BT-103-130	BT-104-130	BTT-103-130	BTT-104-130
135	BT-103-135	BT-104-135	BTT-103-135	BTT-104-135
140	BT-103-140	BT-104-140	BTT-103-140	BTT-104-140





cancellous Screws 4.0mm

	Stainless steel	Titanium		Stainless steel	Titanium
Size (mm)	Partially Threaded	Partially Threaded	Thread Length (mm)	Fully Threaded	Fully Threaded
10	BT-106-10	BTT-106-10	5	BT-105-10	BTT-105-10
12	BT-106-12	BTT-106-12	5	BT-105-12	BTT-105-12
14	BT-106-14	BTT-106-14	5	BT-105-14	BTT-105-14
16	BT-106-16	BTT-106-16	6	BT-105-16	BTT-105-16
18	BT-106-18	BTT-106-18	7	BT-105-18	BTT-105-18
20	BT-106-20	BTT-106-20	8	BT-105-20	BTT-105-20
22	BT-106-22	BTT-106-22	9	BT-105-22	BTT-105-22
24	BT-106-24	BTT-106-24	10	BT-105-24	BTT-105-24
26	BT-106-26	BTT-106-26	12	BT-105-26	BTT-105-26
28	BT-106-28	BTT-106-28	14	BT-105-28	BTT-105-28
30	BT-106-30	BTT-106-30	14	BT-105-30	BTT-105-30
35	BT-106-35	BTT-106-35	14	BT-105-35	BTT-105-35
40	BT-106-40	BTT-106-40	14	BT-105-40	BTT-105-40
45	BT-106-45	BTT-106-45	15	BT-105-45	BTT-105-45
50	BT-106-50	BTT-106-50	15	BT-105-50	BTT-105-50
55	BT-106-55	BTT-106-55	15	BT-105-55	BTT-105-55
60	BT-106-60	BTT-106-60	15	BT-105-60	BTT-105-60
65	BT-106-65	BTT-106-65	15	BT-105-65	BTT-105-65
70	BT-106-70	BTT-106-70	15	BT-105-70	BTT-105-70
75	BT-106-75	BTT-106-75	15	BT-105-75	BTT-105-75
80	BT-106-80	BTT-106-80	15	BT-105-80	BTT-105-80
85	BT-106-85	BTT-106-85	15	BT-105-85	BTT-105-85
90	BT-106-90	BTT-106-90	15	BT-105-90	BTT-105-90
95	BT-106-95	BTT-106-95	15	BT-105-95	BTT-105-95
100	BT-106-100	BTT-106-100	15	BT-105-100	BTT-105-100





Cancellous Screws 6.5mm

Size	Stainless steel	Titanium	Stainless steel	Titanium	Stainless steel	Titanium
	16 mm Thread	16 mm Thread	32 mm Thread	32 mm Thread	Fully thread	Fully thread
20	—	—	—	—	BT-108-20	BTT-108-20
25	—	—	—	—	BT-108-25	BTT-108-25
30	BT-109-30	BTT-109-30	—	—	BT-108-30	BTT-108-30
35	BT-109-35	BTT-109-35	—	—	BT-108-35	BTT-108-35
40	BT-109-40	BTT-109-40	—	—	BT-108-40	BTT-108-40
45	BT-109-45	BTT-109-45	BT-110-45	BTT-110-45	BT-108-45	BTT-108-45
50	BT-109-50	BTT-109-50	BT-110-50	BTT-110-50	BT-108-50	BTT-108-50
55	BT-109-55	BTT-109-55	BT-110-55	BTT-110-55	BT-108-55	BTT-108-55
60	BT-109-60	BTT-109-60	BT-110-60	BTT-110-60	BT-108-60	BTT-108-60
65	BT-109-65	BTT-109-65	BT-110-65	BTT-110-65	BT-108-65	BTT-108-65
70	BT-109-70	BTT-109-70	BT-110-70	BTT-110-70	BT-108-70	BTT-108-70
75	BT-109-75	BTT-109-75	BT-110-75	BTT-110-75	BT-108-75	BTT-108-75
80	BT-109-80	BTT-109-80	BT-110-80	BTT-110-80	BT-108-80	BTT-108-80
85	BT-109-85	BTT-109-85	BT-110-85	BTT-110-85	BT-108-85	BTT-108-85
90	BT-109-90	BTT-109-90	BT-110-90	BTT-110-90	BT-108-90	BTT-108-90
95	BT-109-95	BTT-109-95	BT-110-95	BTT-110-95	BT-108-95	BTT-108-95
100	BT-109-100	BTT-109-100	BT-110-100	BTT-110-100	BT-108-100	BTT-108-100
105	BT-109-105	BTT-109-105	BT-110-105	BTT-110-105	BT-108-105	BTT-108-105
110	BT-109-110	BTT-109-110	BT-110-110	BTT-110-110	BT-108-110	BTT-108-110
115	BT-109-115	BTT-109-115	BT-110-115	BTT-110-115	BT-108-115	BTT-108-115
120	BT-109-120	BTT-109-120	BT-110-120	BTT-110-120	BT-108-120	BTT-108-120
125	BT-109-125	BTT-109-125	BT-110-125	BTT-110-125	BT-108-125	BTT-108-125
130	BT-109-130	BTT-109-130	BT-110-130	BTT-110-130	BT-108-130	BTT-108-130
135	BT-109-135	BTT-109-135	BT-110-135	BTT-110-135	BT-108-135	BTT-108-135
140	BT-109-140	BTT-109-140	BT-110-140	BTT-110-140	BT-108-140	BTT-108-140
145	BT-109-145	BTT-109-145	BT-110-145	BTT-110-145	BT-108-145	BTT-108-145
150	BT-109-150	BTT-109-150	BT-110-150	BTT-110-150	BT-108-150	BTT-108-150





Malleolar Screws 4.5mm

Stainless steel	Titanium	Total Length (mm)	Thread Length (mm)
BT-107-20	BTT-107-20	20	9
BT-107-25	BTT-107-25	25	12
BT-107-30	BTT-107-30	30	15
BT-107-35	BTT-107-35	35	18
BT-107-40	BTT-107-40	40	20
BT-107-45	BTT-107-45	45	22
BT-107-50	BTT-107-50	50	24
BT-107-55	BTT-107-55	55	26
BT-107-60	BTT-107-60	60	28
BT-107-65	BTT-107-65	65	30
BT-107-70	BTT-107-70	70	32
BT-107-75	BTT-107-75	75	34
BT-107-80	BTT-107-80	80	36
BT-107-85	BTT-107-85	85	38
BT-107-90	BTT-107-90	90	40
BT-107-95	BTT-107-95	95	42
BT-107-100	BTT-107-100	100	44
BT-107-105	BTT-107-105	105	46
BT-107-110	BTT-107-110	110	48
BT-107-115	BTT-107-115	115	50
BT-107-120	BTT-107-120	120	52





Cannulated Screws 3.5mm- self tapping

Size (mm)	Stainless steel	Titanium	Thread Length (mm)	Stainless steel	Titanium
	Partially Threaded	Partially Threaded		Fully Threaded	Fully Threaded
10	BT-114-10	BTT-114-10	5	BT-113-10	BTT-113-10
12	BT-114-12	BTT-114-12	5	BT-113-12	BTT-113-12
14	BT-114-14	BTT-114-14	5	BT-113-14	BTT-113-14
16	BT-114-16	BTT-114-16	6	BT-113-16	BTT-113-16
18	BT-114-18	BTT-114-18	6	BT-113-18	BTT-113-18
20	BT-114-20	BTT-114-20	7	BT-113-20	BTT-113-20
22	BT-114-22	BTT-114-22	7	BT-113-22	BTT-113-22
24	BT-114-24	BTT-114-24	8	BT-113-24	BTT-113-24
26	BT-114-26	BTT-114-26	8	BT-113-26	BTT-113-26
28	BT-114-28	BTT-114-28	9	BT-113-28	BTT-113-28
30	BT-114-30	BTT-114-30	10	BT-113-30	BTT-113-30
32	BT-114-32	BTT-114-32	11	BT-113-32	BTT-113-32
34	BT-114-34	BTT-114-34	11	BT-113-34	BTT-113-34
36	BT-114-36	BTT-114-36	12	BT-113-36	BTT-113-36
38	BT-114-38	BTT-114-38	12	BT-113-38	BTT-113-38
40	BT-114-40	BTT-114-40	13	BT-113-40	BTT-113-40
42	BT-114-42	BTT-114-42	14	BT-113-42	BTT-113-42
44	BT-114-44	BTT-114-44	14	BT-113-44	BTT-113-44
46	BT-114-46	BTT-114-46	15	BT-113-46	BTT-113-46
48	BT-114-48	BTT-114-48	15	BT-113-48	BTT-113-48
50	BT-114-50	BTT-114-50	16	BT-113-50	BTT-113-50





Cannulated Screws 4.0 mm-Self tapping

	Stainless steel	Titanium	Stainless steel	Titanium
Size (mm)	Partially Threaded	Partially Threaded	Fully Threaded	Fully Threaded
20	BT-116-20	BTT-116-20	BT-115-20	BTT-115-20
22	BT-116-22	BTT-116-22	BT-115-22	BTT-115-22
24	BT-116-24	BTT-116-24	BT-115-24	BTT-115-24
26	BT-116-26	BTT-116-26	BT-115-26	BTT-115-26
28	BT-116-28	BTT-116-28	BT-115-28	BTT-115-28
30	BT-116-30	BTT-116-30	BT-115-30	BTT-115-30
32	BT-116-32	BTT-116-32	BT-115-32	BTT-115-32
34	BT-116-34	BTT-116-34	BT-115-34	BTT-115-34
36	BT-116-36	BTT-116-36	BT-115-36	BTT-115-36
38	BT-116-38	BTT-116-38	BT-115-38	BTT-115-38
40	BT-116-40	BTT-116-40	BT-115-40	BTT-115-40
42	BT-116-42	BTT-116-42	BT-115-42	BTT-115-42
44	BT-116-44	BTT-116-44	BT-115-44	BTT-115-44
46	BT-116-46	BTT-116-46	BT-115-46	BTT-115-46
48	BT-116-48	BTT-116-48	BT-115-48	BTT-115-48
50	BT-116-50	BTT-116-50	BT-115-50	BTT-115-50
55	BT-116-55	BTT-116-55	BT-115-55	BTT-115-55
60	BT-116-60	BTT-116-60	BT-115-60	BTT-115-60
65	BT-116-65	BTT-116-65	BT-115-65	BTT-115-65
70	BT-116-70	BTT-116-70	BT-115-70	BTT-115-70
75	BT-116-75	BTT-116-75	BT-115-75	BTT-115-75
80	BT-116-80	BTT-116-80	BT-115-80	BTT-115-80
85	BT-116-85	BTT-116-85	BT-115-85	BTT-115-85
90	BT-116-90	BTT-116-90	BT-115-90	BTT-115-90
95	BT-116-95	BTT-116-95	BT-115-95	BTT-115-95
100	BT-116-100	BTT-116-100	BT-115-100	BTT-115-100





Cannulated Screws 6.5 mm-Self tapping

	Stainless steel	Titanium	Stainless steel	Titanium
Size (mm)	16 mm Thread	16 mm Thread	32 mm Thread	32 mm Thread
20	—	—	—	—
25	—	—	—	—
30	BT-117-30	BTT-117-30	—	—
35	BT-117-35	BTT-117-35	—	—
40	BT-117-40	BTT-117-40	—	—
45	BT-117-45	BTT-117-45	BT-118-45	BTT-118-45
50	BT-117-50	BTT-117-50	BT-118-50	BTT-118-50
55	BT-117-55	BTT-117-55	BT-118-55	BTT-118-55
60	BT-117-60	BTT-117-60	BT-118-60	BTT-118-60
65	BT-117-65	BTT-117-65	BT-118-65	BTT-118-65
70	BT-117-70	BTT-117-70	BT-118-70	BTT-118-70
75	BT-117-75	BTT-117-75	BT-118-75	BTT-118-75
80	BT-117-80	BTT-117-80	BT-118-80	BTT-118-80
85	BT-117-85	BTT-117-85	BT-118-85	BTT-118-85
90	BT-117-90	BTT-117-90	BT-118-90	BTT-118-90
95	BT-117-95	BTT-117-95	BT-118-95	BTT-118-95
100	BT-117-100	BTT-117-100	BT-118-100	BTT-118-100
105	BT-117-105	BTT-117-105	BT-118-105	BTT-118-105
110	BT-117-110	BTT-117-110	BT-118-110	BTT-118-110
115	BT-117-115	BTT-117-115	BT-118-115	BTT-118-115
120	BT-117-120	BTT-117-120	BT-118-120	BTT-118-120
125	BT-117-125	BTT-117-125	BT-118-125	BTT-118-125
130	BT-117-130	BTT-117-130	BT-118-130	BTT-118-130
135	BT-117-135	BTT-117-135	BT-118-135	BTT-118-135
140	BT-117-140	BTT-117-140	BT-118-140	BTT-118-140
145	BT-117-145	BTT-117-145	BT-118-145	BTT-118-145
150	BT-117-150	BTT-117-150	BT-118-150	BTT-118-150
160	BT-117-160	BTT-117-160	BT-118-160	BTT-118-160
170	BT-117-170	BTT-117-170	BT-118-170	BTT-118-170
180	BT-117-180	BTT-117-180	BT-118-180	BTT-118-180





Cannulated screws 7.3mm Self tapping

	Stainless steel	Titanium	Stainless steel	Titanium
Size (mm)	16 mm Thread	16 mm Thread	32 mm Thread	32 mm Thread
20	—	—	—	—
25	—	—	—	—
30	BT-119-30	BTT-119-30	—	—
35	BT-119-35	BTT-119-35	—	—
40	BT-119-40	BTT-119-40	—	—
45	BT-119-45	BTT-119-45	BT-120-45	BTT-120-45
50	BT-119-50	BTT-119-50	BT-120-50	BTT-120-50
55	BT-119-55	BTT-119-55	BT-120-55	BTT-120-55
60	BT-119-60	BTT-119-60	BT-120-60	BTT-120-60
65	BT-119-65	BTT-119-65	BT-120-65	BTT-120-65
70	BT-119-70	BTT-119-70	BT-120-70	BTT-120-70
75	BT-119-75	BTT-119-75	BT-120-75	BTT-120-75
80	BT-119-80	BTT-119-80	BT-120-80	BTT-120-80
85	BT-119-85	BTT-119-85	BT-120-85	BTT-120-85
90	BT-119-90	BTT-119-90	BT-120-90	BTT-120-90
95	BT-119-95	BTT-119-95	BT-120-95	BTT-120-95
100	BT-119-100	BTT-119-100	BT-120-100	BTT-120-100
105	BT-119-105	BTT-119-105	BT-120-105	BTT-120-105
110	BT-119-110	BTT-119-110	BT-120-110	BTT-120-110
115	BT-119-115	BTT-119-115	BT-120-115	BTT-120-115
120	BT-119-120	BTT-119-120	BT-120-120	BTT-120-120
125	BT-119-125	BTT-119-125	BT-120-125	BTT-120-125
130	BT-119-130	BTT-119-130	BT-120-130	BTT-120-130
135	BT-119-135	BTT-119-135	BT-120-135	BTT-120-135
140	BT-119-140	BTT-119-140	BT-120-140	BTT-120-140
145	BT-119-145	BTT-119-145	BT-120-145	BTT-120-145
150	BT-119-150	BTT-119-150	BT-120-150	BTT-120-150
155	BT-119-155	BTT-119-155	BT-120-155	BTT-120-155
160	BT-119-160	BTT-119-160	BT-120-160	BTT-120-160
165	BT-119-165	BTT-119-165	BT-120-165	BTT-120-165
170	BT-119-170	BTT-119-170	BT-120-170	BTT-120-170
175	BT-119-175	BTT-119-175	BT-120-175	BTT-120-175
180	BT-119-180	BTT-119-180	BT-120-180	BTT-120-180





Pelvic Lag Screws 3.5 mm

Size (mm)	Stainless steel	Titanium	Stainless steel	Titanium
	Partially Threaded	Partially Threaded	Fully Threaded	Fully Threaded
70	BT-280-70	BTT-280-70	BT-281-70	BTT-281-70
75	BT-280-75	BTT-280-75	BT-281-75	BTT-281-75
80	BT-280-80	BTT-280-80	BT-281-80	BTT-281-80
85	BT-280-85	BTT-280-85	BT-281-85	BTT-281-85
90	BT-280-90	BTT-280-90	BT-281-90	BTT-281-90
95	BT-280-95	BTT-280-95	BT-281-95	BTT-281-95
100	BT-280-100	BTT-280-100	BT-281-100	BTT-281-100
105	BT-280-105	BTT-280-105	BT-281-105	BTT-281-105
110	BT-280-110	BTT-280-110	BT-281-110	BTT-281-110
115	BT-280-115	BTT-280-115	BT-281-115	BTT-281-115
120	BT-280-120	BTT-280-120	BT-281-120	BTT-281-120





Pelvic Lag Screws 6.5 mm

	Stainless steel	Titanium	Stainless steel	Titanium
Size (mm)	16 mm Thread	16 mm Thread	32 mm Thread	32 mm Thread
50	BT-282-50	BTT-282-50	BT-283-50	BTT-283-50
55	BT-282-55	BTT-282-55	BT-283-55	BTT-283-55
60	BT-282-60	BTT-282-60	BT-283-60	BTT-283-60
65	BT-282-65	BTT-282-65	BT-283-65	BTT-283-65
70	BT-282-70	BTT-282-70	BT-283-70	BTT-283-70
75	BT-282-75	BTT-282-75	BT-283-75	BTT-283-75
80	BT-282-80	BTT-282-80	BT-283-80	BTT-283-80
85	BT-282-85	BTT-282-85	BT-283-85	BTT-283-85
90	BT-282-90	BTT-282-90	BT-283-90	BTT-283-90
95	BT-282-95	BTT-282-95	BT-283-95	BTT-283-95
100	BT-282-100	BTT-282-100	BT-283-100	BTT-283-100
105	BT-282-105	BTT-282-105	BT-283-105	BTT-283-105
110	BT-282-110	BTT-282-110	BT-283-110	BTT-283-110
115	BT-282-115	BTT-282-115	BT-283-115	BTT-283-115
120	BT-282-120	BTT-282-120	BT-283-120	BTT-283-120
125	BT-282-125	BTT-282-125	BT-283-125	BTT-283-125
130	BT-282-130	BTT-282-130	BT-283-130	BTT-283-130
135	BT-282-135	BTT-282-135	BT-283-135	BTT-283-135
140	BT-282-140	BTT-282-140	BT-283-140	BTT-283-140
145	BT-282-145	BTT-282-145	BT-283-145	BTT-283-145
150	BT-282-150	BTT-282-150	BT-283-150	BTT-283-150
160	BT-282-160	BTT-282-160	BT-283-160	BTT-283-160
170	BT-282-170	BTT-282-170	BT-283-170	BTT-283-170
180	BT-282-180	BTT-282-180	BT-283-180	BTT-283-180





Locking Screws 2.7mm Self-tapping

Stainless steel	Titanium	Total Length (mm)	Stainless steel	Titanium	Total Length (mm)
BT-129-10	BTT-129-10	10	BT-129-40	BTT-129-40	40
BT-129-12	BTT-129-12	12	BT-129-42	BTT-129-42	42
BT-129-14	BTT-129-14	14	BT-129-44	BTT-129-44	44
BT-129-16	BTT-129-16	16	BT-129-46	BTT-129-46	46
BT-129-18	BTT-129-18	18	BT-129-48	BTT-129-48	48
BT-129-20	BTT-129-20	20	BT-129-50	BTT-129-50	50
BT-129-22	BTT-129-22	22	BT-129-55	BTT-129-55	55
BT-129-24	BTT-129-24	24	BT-129-60	BTT-129-60	60
BT-129-26	BTT-129-26	26	BT-129-65	BTT-129-65	65
BT-129-28	BTT-129-28	28	BT-129-70	BTT-129-70	70
BT-129-30	BTT-129-30	30	BT-129-75	BTT-129-75	75
BT-129-32	BTT-129-32	32	BT-129-80	BTT-129-80	80
BT-129-34	BTT-129-34	34	BT-129-85	BTT-129-85	85
BT-129-36	BTT-129-36	36	BT-129-90	BTT-129-90	90
BT-129-38	BTT-129-38	38	BT-129-95	BTT-129-95	95





Locking Screws 3.5mm Self-tapping

Stainless steel	Titanium	Total Length (mm)	Stainless steel	Titanium	Total Length (mm)
BT-111-10	BTT-111-10	10	BT-111-40	BTT-111-40	40
BT-111-12	BTT-111-12	12	BT-111-42	BTT-111-42	42
BT-111-14	BTT-111-14	14	BT-111-44	BTT-111-44	44
BT-111-16	BTT-111-16	16	BT-111-46	BTT-111-46	46
BT-111-18	BTT-111-18	18	BT-111-48	BTT-111-48	48
BT-111-20	BTT-111-20	20	BT-111-50	BTT-111-50	50
BT-111-22	BTT-111-22	22	BT-111-55	BTT-111-55	55
BT-111-24	BTT-111-24	24	BT-111-60	BTT-111-60	60
BT-111-26	BTT-111-26	26	BT-111-65	BTT-111-65	65
BT-111-28	BTT-111-28	28	BT-111-70	BTT-111-70	70
BT-111-30	BTT-111-30	30	BT-111-75	BTT-111-75	75
BT-111-32	BTT-111-32	32	BT-111-80	BTT-111-80	80
BT-111-34	BTT-111-34	34	BT-111-85	BTT-111-85	85
BT-111-36	BTT-111-36	36	BT-111-90	BTT-111-90	90
BT-111-38	BTT-111-38	38	BT-111-95	BTT-111-95	95





Locking Screws 5.0mm Self tapping

Stainless steel	Titanium	Total Length (mm)	Stainless steel	Titanium	Total Length (mm)
BT-112-16	BTT-112-16	16	BT-112-42	BTT-112-42	42
BT-112-18	BTT-112-18	18	BT-112-44	BTT-112-44	44
BT-112-20	BTT-112-20	20	BT-112-46	BTT-112-46	46
BT-112-22	BTT-112-22	22	BT-112-48	BTT-112-48	48
BT-112-24	BTT-112-24	24	BT-112-50	BTT-112-50	50
BT-112-26	BTT-112-26	26	BT-112-55	BTT-112-55	55
BT-112-28	BTT-112-28	28	BT-112-60	BTT-112-60	60
BT-112-30	BTT-112-30	30	BT-112-65	BTT-112-65	65
BT-112-32	BTT-112-32	32	BT-112-70	BTT-112-70	70
BT-112-34	BTT-112-34	34	BT-112-75	BTT-112-75	75
BT-112-36	BTT-112-36	36	BT-112-80	BTT-112-80	80
BT-112-38	BTT-112-38	38	BT-112-85	BTT-112-85	85
BT-112-40	BTT-112-40	40	BT-112-90	BTT-112-90	90





Locking Osteotomy Screws 6.4 mm

Stainless steel	Titanium	Total Length (mm)	Stainless steel	Titanium	Total Length (mm)
BT-139-30	BTT-139-30	30	BT-139-80	BTT-139-80	80
BT-139-35	BTT-139-35	35	BT-139-85	BTT-139-85	85
BT-139-40	BTT-139-40	40	BT-139-90	BTT-139-90	90
BT-139-45	BTT-139-45	45	BT-139-95	BTT-139-95	95
BT-139-50	BTT-139-50	50	BT-139-100	BTT-139-100	100
BT-139-55	BTT-139-55	55	BT-139-105	BTT-139-105	105
BT-139-60	BTT-139-60	60	BT-139-110	BTT-139-110	110
BT-139-65	BTT-139-65	65	BT-139-115	BTT-139-115	115
BT-139-70	BTT-139-70	70	BT-139-120	BTT-139-120	120
BT-139-75	BTT-139-75	75	BT-139-125	BTT-139-125	125





Locking Cancellous Screws 4.0mm Self tapping

	Stainless steel	Titanium	Stainless steel	Titanium	Stainless steel	Titanium
Size (mm)	16 mm Thread Length	16 mm Thread Length	32 mm Thread Length	32 mm Thread Length	Fully Threaded	Fully Threaded
20	—	—	—	—	BT-127-20	BTT-127-20
25	—	—	—	—	BT-127-25	BTT-127-25
30	BT-125-30	BTT-125-30	—	—	BT-127-30	BTT-127-30
35	BT-125-35	BTT-125-35	—	—	BT-127-35	BTT-127-35
40	BT-125-40	BTT-125-40	—	—	BT-127-40	BTT-127-40
45	BT-125-45	BTT-125-45	BT-126-45	BTT-126-45	BT-127-45	BTT-127-45
50	BT-125-50	BTT-125-50	BT-126-50	BTT-126-50	BT-127-50	BTT-127-50
55	BT-125-55	BTT-125-55	BT-126-55	BTT-126-55	BT-127-55	BTT-127-55
60	BT-125-60	BTT-125-60	BT-126-60	BTT-126-60	BT-127-60	BTT-127-60
65	BT-125-65	BTT-125-65	BT-126-65	BTT-126-65	BT-127-65	BTT-127-65
70	BT-125-70	BTT-125-70	BT-126-70	BTT-126-70	BT-127-70	BTT-127-70
75	BT-125-75	BTT-125-75	BT-126-75	BTT-126-75	BT-127-75	BTT-127-75
80	BT-125-80	BTT-125-80	BT-126-80	BTT-126-80	BT-127-80	BTT-127-80
85	BT-125-85	BTT-125-85	BT-126-85	BTT-126-85	BT-127-85	BTT-127-85
90	BT-125-90	BTT-125-90	BT-126-90	BTT-126-90	BT-127-90	BTT-127-90
95	BT-125-95	BTT-125-95	BT-126-95	BTT-126-95	BT-127-95	BTT-127-95
100	BT-125-100	BTT-125-100	BT-126-100	BTT-126-100	BT-127-100	BTT-127-100
105	BT-125-105	BTT-125-105	BT-126-105	BTT-126-105	BT-127-105	BTT-127-105
110	BT-125-110	BTT-125-110	BT-126-110	BTT-126-110	BT-127-110	BTT-127-110
115	BT-125-115	BTT-125-115	BT-126-115	BTT-126-115	BT-127-115	BTT-127-115
120	BT-125-120	BTT-125-120	BT-126-120	BTT-126-120	BT-127-120	BTT-127-120
125	BT-125-125	BTT-125-125	BT-126-125	BTT-126-125	BT-127-125	BTT-127-125
130	BT-125-130	BTT-125-130	BT-126-130	BTT-126-130	BT-127-130	BTT-127-130
135	BT-125-135	BTT-125-135	BT-126-135	BTT-126-135	BT-127-135	BTT-127-135
140	BT-125-140	BTT-125-140	BT-126-140	BTT-126-140	BT-127-140	BTT-127-140
145	BT-125-145	BTT-125-145	BT-126-145	BTT-126-145	BT-127-145	BTT-127-145
150	BT-125-150	BTT-125-150	BT-126-150	BTT-126-150	BT-127-150	BTT-127-150





Locking Cancellous Screws 5.0mm- Self tapping

	Stainless steel	Titanium	Stainless steel	Titanium	Stainless steel	Titanium
Size (mm)	16 mm Thread Length	16 mm Thread Length	32 mm Thread Length	32 mm Thread Length	Fully Threaded	Fully Threaded
20	—	—	—	—	BT-124-20	BTT-124-20
25	—	—	—	—	BT-124-25	BTT-124-25
30	BT-122-30	BTT-122-30	—	—	BT-124-30	BTT-124-30
35	BT-122-35	BTT-122-35	—	—	BT-124-35	BTT-124-35
40	BT-122-40	BTT-122-40	—	—	BT-124-40	BTT-124-40
45	BT-122-45	BTT-122-45	BT-123-45	BTT-123-45	BT-124-45	BTT-124-45
50	BT-122-50	BTT-122-50	BT-123-50	BTT-123-50	BT-124-50	BTT-124-50
55	BT-122-55	BTT-122-55	BT-123-55	BTT-123-55	BT-124-55	BTT-124-55
60	BT-122-60	BTT-122-60	BT-123-60	BTT-123-60	BT-124-60	BTT-124-60
65	BT-122-65	BTT-122-65	BT-123-65	BTT-123-65	BT-124-65	BTT-124-65
70	BT-122-70	BTT-122-70	BT-123-70	BTT-123-70	BT-124-70	BTT-124-70
75	BT-122-75	BTT-122-75	BT-123-75	BTT-123-75	BT-124-75	BTT-124-75
80	BT-122-80	BTT-122-80	BT-123-80	BTT-123-80	BT-124-80	BTT-124-80
85	BT-122-85	BTT-122-85	BT-123-85	BTT-123-85	BT-124-85	BTT-124-85
90	BT-122-90	BTT-122-90	BT-123-90	BTT-123-90	BT-124-90	BTT-124-90
95	BT-122-95	BTT-122-95	BT-123-95	BTT-123-95	BT-124-95	BTT-124-95
100	BT-122-100	BTT-122-100	BT-123-100	BTT-123-100	BT-124-100	BTT-124-100
105	BT-122-105	BTT-122-105	BT-123-105	BTT-123-105	BT-124-105	BTT-124-105
110	BT-122-110	BTT-122-110	BT-123-110	BTT-123-110	BT-124-110	BTT-124-110
115	BT-122-115	BTT-122-115	BT-123-115	BTT-123-115	BT-124-115	BTT-124-115
120	BT-122-120	BTT-122-120	BT-123-120	BTT-123-120	BT-124-120	BTT-124-120
125	BT-122-125	BTT-122-125	BT-123-125	BTT-123-125	BT-124-125	BTT-124-125
130	BT-122-130	BTT-122-130	BT-123-130	BTT-123-130	BT-124-130	BTT-124-130
135	BT-122-135	BTT-122-135	BT-123-135	BTT-123-135	BT-124-135	BTT-124-135
140	BT-122-140	BTT-122-140	BT-123-140	BTT-123-140	BT-124-140	BTT-124-140
145	BT-122-145	BTT-122-145	BT-123-145	BTT-123-145	BT-124-145	BTT-124-145
150	BT-122-150	BTT-122-150	BT-123-150	BTT-123-150	BT-124-150	BTT-124-150





Locking Cannulated screws 6.5 mm Self tapping

	Stainless steel	Titanium	Stainless steel	Titanium
Size (mm)	16 mm Thread	16 mm Thread	32 mm Thread	32 mm Thread
20	—	—	—	—
25	—	—	—	—
30	BT-158-30	BTT-158-30	—	—
35	BT-158-35	BTT-158-35	—	—
40	BT-158-40	BTT-158-40	—	—
45	BT-158-45	BTT-158-45	BT-159-45	BTT-159-45
50	BT-158-50	BTT-158-50	BT-159-50	BTT-159-50
55	BT-158-55	BTT-158-55	BT-159-55	BTT-159-55
60	BT-158-60	BTT-158-60	BT-159-60	BTT-159-60
65	BT-158-65	BTT-158-65	BT-159-65	BTT-159-65
70	BT-158-70	BTT-158-70	BT-159-70	BTT-159-70
75	BT-158-75	BTT-158-75	BT-159-75	BTT-159-75
80	BT-158-80	BTT-158-80	BT-159-80	BTT-159-80
85	BT-158-85	BTT-158-85	BT-159-85	BTT-159-85
90	BT-158-90	BTT-158-90	BT-159-90	BTT-159-90
95	BT-158-95	BTT-158-95	BT-159-95	BTT-159-95
100	BT-158-100	BTT-158-100	BT-159-100	BTT-159-100
105	BT-158-105	BTT-158-105	BT-159-105	BTT-159-105
110	BT-158-110	BTT-158-110	BT-159-110	BTT-159-110
115	BT-158-115	BTT-158-115	BT-159-115	BTT-159-115
120	BT-158-120	BTT-158-120	BT-159-120	BTT-159-120
125	BT-158-125	BTT-158-125	BT-159-125	BTT-159-125
130	BT-158-130	BTT-158-130	BT-159-130	BTT-159-130
135	BT-158-135	BTT-158-135	BT-159-135	BTT-159-135
140	BT-158-140	BTT-158-140	BT-159-140	BTT-159-140
145	BT-158-145	BTT-158-145	BT-159-145	BTT-159-145
150	BT-158-150	BTT-158-150	BT-159-150	BTT-159-150
160	BT-158-160	BTT-158-160	BT-159-160	BTT-159-160
170	BT-158-170	BTT-158-170	BT-159-170	BTT-159-170
180	BT-158-180	BTT-158-180	BT-159-180	BTT-159-180





DHS/DCS Compression Screws

Stainless steel	Titanium	Length (mm)
BT-130-36	BTT-130-36	36



Spacer

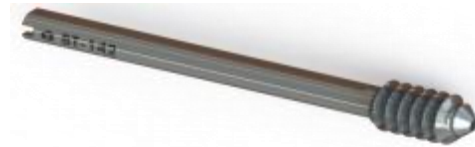
Size (mm)	Stainless steel	Titanium
3.5	BT-121-35	BTT-121-35
5	BT-121-50	BTT-121-50





DHS/DCS Nail screws

Size (mm)	Stainless steel	Titanium
50	BT-142-50	BTT-142-50
55	BT-142-55	BTT-142-55
60	BT-142-60	BTT-142-60
65	BT-142-65	BTT-142-65
70	BT-142-70	BTT-142-70
75	BT-142-75	BTT-142-75
80	BT-142-80	BTT-142-80
85	BT-142-85	BTT-142-85
90	BT-142-90	BTT-142-90
95	BT-142-95	BTT-142-95
100	BT-142-100	BTT-142-100
105	BT-142-105	BTT-142-105
110	BT-142-110	BTT-142-110
115	BT-142-115	BTT-142-115
120	BT-142-120	BTT-142-120
125	BT-142-125	BTT-142-125
130	BT-142-130	BTT-142-130
135	BT-142-135	BTT-142-135
140	BT-142-140	BTT-142-140
145	BT-142-145	BTT-142-145



Double thread Cannulated Compression Titanium Screws

P-N	size		
	Diameter (mm)	Diameter (mm)	Length (mm)
Titanium			
BTT-162-10	3.4	2.7	10
BTT-162-12	3.4	2.7	12
BTT-162-14	3.4	2.7	14
BTT-162-16	3.4	2.7	16
BTT-162-18	3.4	2.7	18
BTT-162-20	3.4	2.7	20
BTT-162-22	3.4	2.7	22
BTT-162-24	3.4	2.7	24
BTT-162-26	3.4	2.7	26
BTT-162-28	3.4	2.7	28
BTT-162-30	3.4	2.7	30
BTT-162-32	3.4	2.7	32
BTT-162-34	3.4	2.7	34
BTT-162-36	3.4	2.7	36





Headless Cannulated Compression Titanium Screws 3.5 mm

Titanium	Total Length (mm)	Titanium	Total Length (mm)
BTT-275-12	12	BTT-275-38	38
BTT-275-14	14	BTT-275-40	40
BTT-275-16	16	BTT-275-42	42
BTT-275-18	18	BTT-275-44	44
BTT-275-20	20	BTT-275-46	46
BTT-275-22	22	BTT-275-48	48
BTT-275-24	24	BTT-275-50	50
BTT-275-26	26	BTT-275-55	55
BTT-275-28	28	BTT-275-60	60
BTT-275-30	30	BTT-275-65	65
BTT-275-32	32	BTT-275-70	70
BTT-275-34	34	BTT-275-75	75
BTT-275-36	36	BTT-275-80	80





Headless Cannulated Compression Titanium Screws 5.0 mm

Titanium	Total Length (mm)	Titanium	Total Length (mm)
BTT-276-12	12	BTT-276-38	38
BTT-276-14	14	BTT-276-40	40
BTT-276-16	16	BTT-276-45	45
BTT-276-18	18	BTT-276-50	50
BTT-276-20	20	BTT-276-55	55
BTT-276-22	22	BTT-276-60	60
BTT-276-24	24	BTT-276-65	65
BTT-276-26	26	BTT-276-70	70
BTT-276-28	28	BTT-276-75	75
BTT-276-30	30	BTT-276-80	80
BTT-276-32	32	BTT-276-85	85
BTT-276-34	34	BTT-276-90	90
BTT-276-36	36	BTT-276-95	95





Interference Screws

Titanium	Absorbable	PEEK CF	Diameter (mm)	Total Length (mm)
BTT-284-20	BTA-284-20	BTP-284-20	7	20
BTT-284-25	BTA-284-25	BTP-284-25	7	25
BTT-284-30	BTA-284-30	BTP-284-30	7	30
BTT-284-35	BTA-284-35	BTP-284-35	7	35
BTT-285-20	BTA-285-20	BTP-285-20	8	20
BTT-285-25	BTA-285-25	BTP-285-25	8	25
BTT-285-30	BTA-285-30	BTP-285-30	8	30
BTT-285-35	BTA-285-35	BTP-285-35	8	35
BTT-286-20	BTA-286-20	BTP-286-20	9	20
BTT-286-25	BTA-286-25	BTP-286-25	9	25
BTT-286-30	BTA-286-30	BTP-286-30	9	30
BTT-286-35	BTA-286-35	BTP-286-35	9	35
BTT-287-25	BTA-287-25	BTP-287-25	10	25
BTT-287-30	BTA-287-30	BTP-287-30	10	30
BTT-287-35	BTA-287-35	BTP-287-35	10	35
BTT-288-25	BTA-288-25	BTP-288-25	11	25
BTT-288-30	BTA-288-30	BTP-288-30	11	30
BTT-288-35	BTA-288-35	BTP-288-35	11	35
BTT-289-25	BTA-289-25	BTP-289-25	12	25
BTT-289-30	BTA-289-30	BTP-289-30	12	30
BTT-289-35	BTA-289-35	BTP-289-35	12	35



Suture Anchors

Titanium	PEEK CF	Diameter (mm)	Total Length (mm)
BTT-290-8	BTP-290-8	2.8	8
BTT-290-10	BTP-290-10	2.8	10
BTT-290-163	BTP-290-163	2.8	16.3
BTT-290-181	BTP-290-181	2.8	18.1
BTT-291-8	BTP-291-8	3.5	8
BTT-291-10	BTP-291-10	3.5	10
BTT-291-163	BTP-291-163	3.5	16.3
BTT-291-181	BTP-291-181	3.5	18.1
BTT-292-163	BTP-292-163	4.5	16.3
BTT-292-181	BTP-292-181	4.5	18.1
BTT-293-163	BTP-293-163	5.5	16.3
BTT-293-181	BTP-293-181	5.5	18.1





Endo Button

Titanium	Width of Button (mm)	Length of Button (mm)	Description
BTT-294-1459	1.4	5.9	Nano
BTT-295-208	2.0	8	Micro
BTT-296-3912	3.9	12	Mini
BTT-296-3914	3.9	14	Standard
BTT-297-4416	4.4	16.5	Large
BTT-297-4421	4.4	21	XL





Bone Tech Co.Ltd
Medical Instrument Co.

Section 2

Nails



Locking Bolt screws 3.9mm

Stainless Steel	Titanium	Length (mm)	Stainless Steel	Titanium	Length (mm)
BT-140-18	BTT-140-18	18	BT-140-48	BTT-140-48	48
BT-140-20	BTT-140-20	20	BT-140-50	BTT-140-50	50
BT-140-22	BTT-140-22	22	BT-140-52	BTT-140-52	52
BT-140-24	BTT-140-24	24	BT-140-54	BTT-140-54	54
BT-140-26	BTT-140-26	26	BT-140-56	BTT-140-56	56
BT-140-28	BTT-140-28	28	BT-140-58	BTT-140-58	58
BT-140-30	BTT-140-30	30	BT-140-60	BTT-140-60	60
BT-140-32	BTT-140-32	32	BT-140-62	BTT-140-62	62
BT-140-34	BTT-140-34	34	BT-140-64	BTT-140-64	64
BT-140-36	BTT-140-36	36	BT-140-66	BTT-140-66	66
BT-140-38	BTT-140-38	38	BT-140-68	BTT-140-68	68
BT-140-40	BTT-140-40	40	BT-140-70	BTT-140-70	70
BT-140-42	BTT-140-42	42	BT-140-75	BTT-140-75	75
BT-140-44	BTT-140-44	44	BT-140-80	BTT-140-80	80
BT-140-46	BTT-140-46	46	BT-140-85	BTT-140-85	85



Locking Bolt screws 4.7mm

Stainless Steel	Titanium	Length (mm)	Stainless Steel	Titanium	Length (mm)
BT-161-20	BTT-161-20	20	BT-161-50	BTT-161-50	50
BT-161-22	BTT-161-22	22	BT-161-52	BTT-161-52	52
BT-161-24	BTT-161-24	24	BT-161-54	BTT-161-54	54
BT-161-26	BTT-161-26	26	BT-161-56	BTT-161-56	56
BT-161-28	BTT-161-28	28	BT-161-58	BTT-161-58	58
BT-161-30	BTT-161-30	30	BT-161-60	BTT-161-60	60
BT-161-32	BTT-161-32	32	BT-161-62	BTT-161-62	62
BT-161-34	BTT-161-34	34	BT-161-64	BTT-161-64	64
BT-161-36	BTT-161-36	36	BT-161-66	BTT-161-66	66
BT-161-38	BTT-161-38	38	BT-161-68	BTT-161-68	68
BT-161-40	BTT-161-40	40	BT-161-70	BTT-161-70	70
BT-161-42	BTT-161-42	42	BT-161-75	BTT-161-75	75
BT-161-44	BTT-161-44	44	BT-161-80	BTT-161-80	80
BT-161-46	BTT-161-46	46	BT-161-85	BTT-161-85	85
BT-161-48	BTT-161-48	48	BT-161-90	BTT-161-90	90





Locking Bolt screws 4.9mm

Stainless Steel	Titanium	Length (mm)	Stainless Steel	Titanium	Length (mm)
BT-141-20	BTT-141-20	20	BT-141-50	BTT-141-50	50
BT-141-22	BTT-141-22	22	BT-141-52	BTT-141-52	52
BT-141-24	BTT-141-24	24	BT-141-54	BTT-141-54	54
BT-141-26	BTT-141-26	26	BT-141-56	BTT-141-56	56
BT-141-28	BTT-141-28	28	BT-141-58	BTT-141-58	58
BT-141-30	BTT-141-30	30	BT-141-60	BTT-141-60	60
BT-141-32	BTT-141-32	32	BT-141-62	BTT-141-62	62
BT-141-34	BTT-141-34	34	BT-141-64	BTT-141-64	64
BT-141-36	BTT-141-36	36	BT-141-66	BTT-141-66	66
BT-141-38	BTT-141-38	38	BT-141-68	BTT-141-68	68
BT-141-40	BTT-141-40	40	BT-141-70	BTT-141-70	70
BT-141-42	BTT-141-42	42	BT-141-75	BTT-141-75	75
BT-141-44	BTT-141-44	44	BT-141-80	BTT-141-80	80
BT-141-46	BTT-141-46	46	BT-141-85	BTT-141-85	85
BT-141-48	BTT-141-48	48	BT-141-90	BTT-141-90	90





Cannulated Tibial Nail

Stainless Steel	Titanium	Diameter (mm)	Length (mm)
BT-190-280	BTT-190-280	8	280
BT-190-300	BTT-190-300	8	300
BT-190-320	BTT-190-320	8	320
BT-190-340	BTT-190-340	8	340
BT-190-360	BTT-190-360	8	360
BT-190-380	BTT-190-380	8	380
BT-191-280	BTT-191-280	9	280
BT-191-300	BTT-191-300	9	300
BT-191-320	BTT-191-320	9	320
BT-191-340	BTT-191-340	9	340
BT-191-360	BTT-191-360	9	360
BT-191-380	BTT-191-380	9	380
BT-192-280	BTT-192-280	10	280
BT-192-300	BTT-192-300	10	300
BT-192-320	BTT-192-320	10	320
BT-192-340	BTT-192-340	10	340
BT-192-360	BTT-192-360	10	360
BT-192-380	BTT-192-380	10	380
BT-193-280	BTT-193-280	11	280
BT-193-300	BTT-193-300	11	300
BT-193-320	BTT-193-320	11	320
BT-193-340	BTT-193-340	11	340
BT-193-360	BTT-193-360	11	360
BT-193-380	BTT-193-380	11	380
BT-194-280	BTT-194-280	12	280
BT-194-300	BTT-194-300	12	300
BT-194-320	BTT-194-320	12	320
BT-194-340	BTT-194-340	12	340
BT-194-360	BTT-194-360	12	360
BT-194-380	BTT-194-380	12	380





Cannulated Femoral Nail

Stainless Steel	Titanium	Diameter (mm)	Length (mm)
BT-184-320	BTT-184-320	9	320
BT-184-340	BTT-184-340	9	340
BT-184-360	BTT-184-360	9	360
BT-184-380	BTT-184-380	9	380
BT-184-400	BTT-184-400	9	400
BT-184-420	BTT-184-420	9	420
BT-184-440	BTT-184-440	9	440
BT-184-460	BTT-184-460	9	460
BT-185-320	BTT-185-320	10	320
BT-185-340	BTT-185-340	10	340
BT-185-360	BTT-185-360	10	360
BT-185-380	BTT-185-380	10	380
BT-185-400	BTT-185-400	10	400
BT-185-420	BTT-185-420	10	420
BT-185-440	BTT-185-440	10	440
BT-185-460	BTT-185-460	10	460
BT-186-320	BTT-186-320	11	320
BT-186-340	BTT-186-340	11	340
BT-186-360	BTT-186-360	11	360
BT-186-380	BTT-186-380	11	380
BT-186-400	BTT-186-400	11	400
BT-186-420	BTT-186-420	11	420
BT-186-440	BTT-186-440	11	440
BT-186-460	BTT-186-460	11	460
BT-187-320	BTT-187-320	12	320
BT-187-340	BTT-187-340	12	340
BT-187-360	BTT-187-360	12	360
BT-187-380	BTT-187-380	12	380
BT-187-400	BTT-187-400	12	400
BT-187-420	BTT-187-420	12	420
BT-187-440	BTT-187-440	12	440
BT-187-460	BTT-187-460	12	460
BT-188-320	BTT-188-320	13	320
BT-188-340	BTT-188-340	13	340
BT-188-360	BTT-188-360	13	360
BT-188-380	BTT-188-380	13	380
BT-188-400	BTT-188-400	13	400
BT-188-420	BTT-188-420	13	420
BT-188-440	BTT-188-440	13	440
BT-188-460	BTT-188-460	13	460
BT-189-320	BTT-189-320	14	320
BT-189-340	BTT-189-340	14	340
BT-189-360	BTT-189-360	14	360
BT-189-380	BTT-189-380	14	380
BT-189-400	BTT-189-400	14	400
BT-189-420	BTT-189-420	14	420
BT-189-440	BTT-189-440	14	440
BT-189-460	BTT-189-460	14	460





Cannulated Expert Tibial Nail

Stainless Steel	Titanium	Diameter (mm)	Length (mm)
BT-206-280	BTT-206-280	8	280
BT-206-300	BTT-206-300	8	300
BT-206-320	BTT-206-320	8	320
BT-206-340	BTT-206-340	8	340
BT-206-360	BTT-206-360	8	360
BT-206-380	BTT-206-380	8	380
BT-207-280	BTT-207-280	9	280
BT-207-300	BTT-207-300	9	300
BT-207-320	BTT-207-320	9	320
BT-207-340	BTT-207-340	9	340
BT-207-360	BTT-207-360	9	360
BT-207-380	BTT-207-380	9	380
BT-208-280	BTT-208-280	10	280
BT-208-300	BTT-208-300	10	300
BT-208-320	BTT-208-320	10	320
BT-208-340	BTT-208-340	10	340
BT-208-360	BTT-208-360	10	360
BT-208-380	BTT-208-380	10	380
BT-209-280	BTT-209-280	11	280
BT-209-300	BTT-209-300	11	300
BT-209-320	BTT-209-320	11	320
BT-209-340	BTT-209-340	11	340
BT-209-360	BTT-209-360	11	360
BT-209-380	BTT-209-380	11	380
BT-210-280	BTT-210-280	12	280
BT-210-300	BTT-210-300	12	300
BT-210-320	BTT-210-320	12	320
BT-210-340	BTT-210-340	12	340
BT-210-360	BTT-210-360	12	360
BT-210-380	BTT-210-380	12	380





Cannulated Expert Femoral Nail

Stainless Steel	Titanium	Diameter (mm)	Length (mm)
BT-200-320	BTT-200-320	9	320
BT-200-340	BTT-200-340	9	340
BT-200-360	BTT-200-360	9	360
BT-200-380	BTT-200-380	9	380
BT-200-400	BTT-200-400	9	400
BT-200-420	BTT-200-420	9	420
BT-200-440	BTT-200-440	9	440
BT-200-460	BTT-200-460	9	460
BT-201-320	BTT-201-340	10	320
BT-201-340	BTT-201-340	10	340
BT-201-360	BTT-201-360	10	360
BT-201-380	BTT-201-380	10	380
BT-201-400	BTT-201-400	10	400
BT-201-420	BTT-201-420	10	420
BT-201-440	BTT-201-440	10	440
BT-201-460	BTT-201-460	10	460
BT-202-320	BTT-202-320	11	320
BT-202-340	BTT-202-340	11	340
BT-202-360	BTT-202-360	11	360
BT-202-380	BTT-202-380	11	380
BT-202-400	BTT-202-400	11	400
BT-202-420	BTT-202-420	11	420
BT-202-440	BTT-202-440	11	440
BT-202-460	BTT-202-460	11	460
BT-203-320	BTT-203-320	12	320
BT-203-340	BTT-203-340	12	340
BT-203-360	BTT-203-360	12	360
BT-203-380	BTT-203-380	12	380
BT-203-400	BTT-203-400	12	400
BT-203-420	BTT-203-420	12	420
BT-203-440	BTT-203-440	12	440
BT-203-460	BTT-203-460	12	460
BT-204-320	BTT-204-320	13	320
BT-204-340	BTT-204-340	13	340
BT-204-360	BTT-204-360	13	360
BT-204-380	BTT-204-380	13	380
BT-204-400	BTT-204-400	13	400
BT-204-420	BTT-204-420	13	420
BT-204-440	BTT-204-440	13	440
BT-204-460	BTT-204-460	13	460
BT-205-320	BTT-205-320	14	320
BT-205-340	BTT-205-340	14	340
BT-205-360	BTT-205-360	14	360
BT-205-380	BTT-205-380	14	380
BT-205-400	BTT-205-400	14	400
BT-205-420	BTT-205-420	14	420
BT-205-440	BTT-205-440	14	440
BT-205-460	BTT-205-460	14	460





Cannulated Humeral Nail-EX

Stainless Steel	Titanium	Diameter (mm)	Length (mm)
BT-131-190	BTT-131-190	7	190
BT-131-200	BTT-131-200	7	200
BT-131-210	BTT-131-210	7	210
BT-131-220	BTT-131-220	7	220
BT-131-230	BTT-131-230	7	230
BT-131-240	BTT-131-240	7	240
BT-131-250	BTT-131-250	7	250
BT-131-260	BTT-131-260	7	260
BT-131-270	BTT-131-270	7	270
BT-131-280	BTT-131-280	7	280
BT-131-290	BTT-131-290	7	290
BT-131-300	BTT-131-300	7	300
BT-131-310	BTT-131-310	7	310
BT-131-320	BTT-131-320	7	320
BT-132-190	BTT-132-190	9	190
BT-132-200	BTT-132-200	9	200
BT-132-210	BTT-132-210	9	210
BT-132-220	BTT-132-220	9	220
BT-132-230	BTT-132-230	9	230
BT-132-240	BTT-132-240	9	240
BT-132-250	BTT-132-250	9	250
BT-132-260	BTT-132-260	9	260
BT-132-270	BTT-132-270	9	270
BT-132-280	BTT-132-280	9	280
BT-132-290	BTT-132-290	9	290
BT-132-300	BTT-132-300	9	300
BT-132-310	BTT-132-310	9	310
BT-132-320	BTT-132-320	9	320
BT-133-190	BTT-133-190	11	190
BT-133-200	BTT-133-200	11	200
BT-133-210	BTT-133-210	11	210
BT-133-220	BTT-133-220	11	220
BT-133-230	BTT-133-230	11	230
BT-133-240	BTT-133-240	11	240
BT-133-250	BTT-133-250	11	250
BT-133-260	BTT-133-260	11	260
BT-133-270	BTT-133-270	11	270
BT-133-280	BTT-133-280	11	280
BT-133-290	BTT-133-290	11	290
BT-133-300	BTT-133-300	11	300
BT-133-310	BTT-133-310	11	310
BT-133-320	BTT-133-320	11	320





Titanium cannulated trochanteric fixation nail (short nail)

Titanium	Diameter (mm)	Length (mm)	Neck angle
BTT-134-01	10	170	125
BTT-134-02	10	170	130
BTT-134-03	10	170	135
BTT-134-04	10	235	125
BTT-134-05	10	235	130
BTT-134-06	10	235	135
BTT-134-07	11	170	125
BTT-134-08	11	170	130
BTT-134-09	11	170	135
BTT-134-10	11	235	125
BTT-134-11	11	235	130
BTT-134-12	11	235	135
BTT-134-13	12	170	125
BTT-134-14	12	170	130
BTT-134-15	12	170	135
BTT-134-16	12	235	125
BTT-134-17	12	235	130
BTT-134-18	12	235	135





Cannulated PFNA Nail

Titanium	Diameter (mm)	Length (mm)	Description
BTT-211-170	9	170	Short
BTT-211-200	9	200	Short
BTT-211-240	9	240	Short
BTT-211-360	9	360	Long
BTT-211-380	9	380	Long
BTT-211-400	9	400	Long
BTT-212-170	10	170	Short
BTT-212-200	10	200	Short
BTT-212-240	10	240	Short
BTT-212-360	10	360	Long
BTT-212-380	10	380	Long
BTT-212-400	10	400	Long
BTT-213-170	11	170	Short
BTT-213-200	11	200	Short
BTT-213-240	11	240	Short
BTT-213-360	11	360	Long
BTT-213-380	11	380	Long
BTT-213-400	11	400	Long
BTT-214-170	12	170	Short
BTT-214-200	12	200	Short
BTT-214-240	12	240	Short
BTT-214-360	12	360	Long
BTT-214-380	12	380	Long
BTT-214-400	12	400	Long





Ankle Fusion Nail

Titanium	Diameter (mm)	Length (mm)
BTT-215-160	9	160
BTT-215-200	9	200
BTT-215-240	9	240
BTT-216-160	10	160
BTT-216-200	10	200
BTT-216-240	10	240
BTT-217-160	11	160
BTT-217-200	11	200
BTT-217-240	11	240
BTT-218-160	12	160
BTT-218-200	12	200
BTT-218-240	12	240





Titanium cannulated trochanteric fixation nail (long nail)

Titanium	Diameter (mm)	Length (mm)	Neck angle		Titanium	Diameter (mm)	Length (mm)	Neck angle	
BTT-135-1301	10	300	125	Right	BTT-135-2301	10	300	125	Left
BTT-135-1321	10	320	125	Right	BTT-135-2321	10	320	125	Left
BTT-135-1341	10	340	125	Right	BTT-135-2341	10	340	125	Left
BTT-135-1361	10	360	125	Right	BTT-135-2361	10	360	125	Left
BTT-135-1381	10	380	125	Right	BTT-135-2381	10	380	125	Left
BTT-135-1401	10	400	125	Right	BTT-135-2401	10	400	125	Left
BTT-135-1421	10	420	125	Right	BTT-135-2421	10	420	125	Left
BTT-135-1441	10	440	125	Right	BTT-135-2441	10	440	125	Left
BTT-135-1461	10	460	125	Right	BTT-135-2461	10	460	125	Left
BTT-135-1302	10	300	130	Right	BTT-135-2302	10	300	130	Left
BTT-135-1322	10	320	130	Right	BTT-135-2322	10	320	130	Left
BTT-135-1342	10	340	130	Right	BTT-135-2342	10	340	130	Left
BTT-135-1362	10	360	130	Right	BTT-135-2362	10	360	130	Left
BTT-135-1382	10	380	130	Right	BTT-135-2382	10	380	130	Left
BTT-135-1402	10	400	130	Right	BTT-135-2402	10	400	130	Left
BTT-135-1422	10	420	130	Right	BTT-135-2422	10	420	130	Left
BTT-135-1442	10	440	130	Right	BTT-135-2442	10	440	130	Left
BTT-135-1462	10	460	130	Right	BTT-135-2462	10	460	130	Left
BTT-135-1303	10	300	135	Right	BTT-135-2303	10	300	135	Left
BTT-135-1323	10	320	135	Right	BTT-135-2323	10	320	135	Left
BTT-135-1343	10	340	135	Right	BTT-135-2343	10	340	135	Left
BTT-135-1363	10	360	135	Right	BTT-135-2363	10	360	135	Left
BTT-135-1383	10	380	135	Right	BTT-135-2383	10	380	135	Left
BTT-135-1403	10	400	135	Right	BTT-135-2403	10	400	135	Left
BTT-135-1423	10	420	135	Right	BTT-135-2423	10	420	135	Left
BTT-135-1443	10	440	135	Right	BTT-135-2443	10	440	135	Left
BTT-135-1463	10	460	135	Right	BTT-135-2463	10	460	135	Left
BTT-136-1301	11	300	125	Right	BTT-136-2301	11	300	125	Left
BTT-136-1321	11	320	125	Right	BTT-136-2321	11	320	125	Left
BTT-136-1341	11	340	125	Right	BTT-136-2341	11	340	125	Left
BTT-136-1361	11	360	125	Right	BTT-136-2361	11	360	125	Left
BTT-136-1381	11	380	125	Right	BTT-136-2381	11	380	125	Left
BTT-136-1401	11	400	125	Right	BTT-136-2401	11	400	125	Left
BTT-136-1421	11	420	125	Right	BTT-136-2421	11	420	125	Left
BTT-136-1441	11	440	125	Right	BTT-136-2441	11	440	125	Left
BTT-136-1461	11	460	125	Right	BTT-136-2461	11	460	125	Left
BTT-136-1302	11	300	130	Right	BTT-136-2302	11	300	130	Left
BTT-136-1322	11	320	130	Right	BTT-136-2322	11	320	130	Left
BTT-136-1342	11	340	130	Right	BTT-136-2342	11	340	130	Left
BTT-136-1362	11	360	130	Right	BTT-136-2362	11	360	130	Left
BTT-136-1382	11	380	130	Right	BTT-136-2382	11	380	130	Left
BTT-136-1402	11	400	130	Right	BTT-136-2402	11	400	130	Left
BTT-136-1422	11	420	130	Right	BTT-136-2422	11	420	130	Left
BTT-136-1442	11	440	130	Right	BTT-136-2442	11	440	130	Left
BTT-136-1462	11	460	130	Right	BTT-136-2462	11	460	130	Left
BTT-136-1303	11	300	135	Right	BTT-136-2303	11	300	135	Left
BTT-136-1323	11	320	135	Right	BTT-136-2323	11	320	135	Left
BTT-136-1343	11	340	135	Right	BTT-136-2343	11	340	135	Left
BTT-136-1363	11	360	135	Right	BTT-136-2363	11	360	135	Left
BTT-136-1383	11	380	135	Right	BTT-136-2383	11	380	135	Left





Titanium cannulated trochanteric fixation nail (long nail)

Titanium	Diameter (mm)	Length (mm)	Neck angle		Titanium	Diameter (mm)	Length (mm)	Neck angle	
BTT-136-1403	11	400	135	Right	BTT-136-2403	11	400	135	Left
BTT-136-1423	11	420	135	Right	BTT-136-2423	11	420	135	Left
BTT-136-1443	11	440	135	Right	BTT-136-2443	11	440	135	Left
BTT-136-1463	11	460	135	Right	BTT-136-2463	11	460	135	Left
BTT-137-1301	12	300	125	Right	BTT-137-2301	12	300	125	Left
BTT-137-1321	12	320	125	Right	BTT-137-2321	12	320	125	Left
BTT-137-1341	12	340	125	Right	BTT-137-2341	12	340	125	Left
BTT-137-1361	12	360	125	Right	BTT-137-2361	12	360	125	Left
BTT-137-1381	12	380	125	Right	BTT-137-2381	12	380	125	Left
BTT-137-1401	12	400	125	Right	BTT-137-2401	12	400	125	Left
BTT-137-1421	12	420	125	Right	BTT-137-2421	12	420	125	Left
BTT-137-1441	12	440	125	Right	BTT-137-2441	12	440	125	Left
BTT-137-1461	12	460	125	Right	BTT-137-2461	12	460	125	Left
BTT-137-1302	12	300	130	Right	BTT-137-2302	12	300	130	Left
BTT-137-1322	12	320	130	Right	BTT-137-2322	12	320	130	Left
BTT-137-1342	12	340	130	Right	BTT-137-2342	12	340	130	Left
BTT-137-1362	12	360	130	Right	BTT-137-2362	12	360	130	Left
BTT-137-1382	12	380	130	Right	BTT-137-2382	12	380	130	Left
BTT-137-1402	12	400	130	Right	BTT-137-2402	12	400	130	Left
BTT-137-1422	12	420	130	Right	BTT-137-2422	12	420	130	Left
BTT-137-1442	12	440	130	Right	BTT-137-2442	12	440	130	Left
BTT-137-1462	12	460	130	Right	BTT-137-2462	12	460	130	Left
BTT-137-1303	12	300	135	Right	BTT-137-2303	12	300	135	Left
BTT-137-1323	12	320	135	Right	BTT-137-2323	12	320	135	Left
BTT-137-1343	12	340	135	Right	BTT-137-2343	12	340	135	Left
BTT-137-1363	12	360	135	Right	BTT-137-2363	12	360	135	Left
BTT-137-1383	12	380	135	Right	BTT-137-2383	12	380	135	Left
BTT-137-1403	12	400	135	Right	BTT-137-2403	12	400	135	Left
BTT-137-1423	12	420	135	Right	BTT-137-2423	12	420	135	Left
BTT-137-1443	12	440	135	Right	BTT-137-2443	12	440	135	Left
BTT-137-1463	12	460	135	Right	BTT-137-2463	12	460	135	Left





PFNA Lag Screws 10.4 mm

Titanium	Length (mm)
BTT-226-60	60
BTT-226-65	65
BTT-226-70	70
BTT-226-75	75
BTT-226-80	80
BTT-226-85	85
BTT-226-90	90
BTT-226-95	95
BTT-226-100	100
BTT-226-105	105
BTT-226-110	110
BTT-226-115	115
BTT-226-120	120



AntiRotation Screws 6.5 mm

Titanium	Length (mm)
BTT-227-60	60
BTT-227-65	65
BTT-227-70	70
BTT-227-75	75
BTT-227-80	80
BTT-227-85	85
BTT-227-90	90
BTT-227-95	95
BTT-227-100	100
BTT-227-105	105
BTT-227-110	110
BTT-227-115	115
BTT-227-120	120



Trochanteric fixation nail screws

Titanium	Length (mm)
BTT-138-070	70
BTT-138-075	75
BTT-138-080	80
BTT-138-085	85
BTT-138-090	90
BTT-138-095	95
BTT-138-100	100
BTT-138-105	105
BTT-138-110	110
BTT-138-115	115
BTT-138-120	120
BTT-138-125	125
BTT-138-130	130





Elastic Nails (T.E.N)

Stainless Steel	Titanium	Diameter (mm)	Length (mm)
BT-160-1.5	BTT-160-1.5	1.5	440
BT-160-2.0	BTT-160-2.0	2.0	440
BT-160-2.5	BTT-160-2.5	2.5	440
BT-160-3.0	BTT-160-3.0	3.0	440
BT-160-3.5	BTT-160-3.5	3.5	440
BT-160-4.0	BTT-160-4.0	4.0	440
BT-160-4.5	BTT-160-4.5	4.5	440
BT-160-5.0	BTT-160-5.0	5.0	440



Rush Nail

Stainless Steel	Titanium	Diameter (mm)	Length (mm)
BT-219-1.0	BTT-219-1.0	1.0	280
BT-219-1.5	BTT-219-1.5	1.5	280
BT-219-2.0	BTT-219-2.0	2.0	280
BT-219-2.5	BTT-219-2.5	2.5	280
BT-219-3.0	BTT-219-3.0	3.0	280
BT-219-3.5	BTT-219-3.5	3.5	280
BT-219-4.0	BTT-219-4.0	4.0	280
BT-219-4.5	BTT-219-4.5	4.5	280
BT-219-5.0	BTT-219-5.0	5.0	280





Femoral & Tibial End Cap

Stainless steel	Titanium	Length (mm)
BT-198-15	BTT-198-15	15



PFNA Locking End cap

Titanium	Length (mm)
BTT-220-12	26
BTT-220-13	31
BTT-220-14	36
BTT-220-15	41



PFNA Dynamic End cap

Titanium	Length (mm)
BTT-220-16	26
BTT-220-17	31
BTT-220-18	36
BTT-220-19	41



Ankle Fusion Nail End cap

Titanium	Length (mm)
BTT-225-15	15





Bone Tech Co.Ltd
Medical Instrument Co.

Section 3

Plate



DCP Plates 3.5mm

Stainless steel	Titanium	Holes	Length (mm)
BT-301-02	BTT-301-02	2	25
BT-301-03	BTT-301-03	3	37
BT-301-04	BTT-301-04	4	49
BT-301-05	BTT-301-05	5	61
BT-301-06	BTT-301-06	6	73
BT-301-07	BTT-301-07	7	85
BT-301-08	BTT-301-08	8	97
BT-301-09	BTT-301-09	9	109
BT-301-10	BTT-301-10	10	121
BT-301-12	BTT-301-12	12	145
BT-301-14	BTT-301-14	14	169
BT-301-16	BTT-301-16	16	194
BT-301-18	BTT-301-18	18	217
BT-301-20	BTT-301-20	20	242
BT-301-22	BTT-301-22	22	265



LC-DCP Plates 3.5m

Stainless steel	Titanium	Holes	Length (mm)
BT-311-02	BTT-311-02	2	25
BT-311-03	BTT-311-03	3	37
BT-311-04	BTT-311-04	4	49
BT-311-05	BTT-311-05	5	61
BT-311-06	BTT-311-06	6	73
BT-311-07	BTT-311-07	7	85
BT-311-08	BTT-311-08	8	97
BT-311-09	BTT-311-09	9	109
BT-311-10	BTT-311-10	10	121
BT-311-12	BTT-311-12	12	145
BT-311-14	BTT-311-14	14	169
BT-311-16	BTT-311-16	16	194
BT-311-18	BTT-311-18	18	217
BT-311-20	BTT-311-20	20	242
BT-311-22	BTT-311-22	22	265





One-Third Tubular Plates 3.5mm

Stainless steel	Titanium	Holes	Length (mm)
BT-302-02	BTT-302-02	2	25
BT-302-03	BTT-302-03	3	37
BT-302-04	BTT-302-04	4	49
BT-302-05	BTT-302-05	5	61
BT-302-06	BTT-302-06	6	73
BT-302-07	BTT-302-07	7	85
BT-302-08	BTT-302-08	8	97
BT-302-09	BTT-302-09	9	109
BT-302-10	BTT-302-10	10	121
BT-302-12	BTT-302-12	12	145



Semi-Tubular plates 3.5

Stainless steel	Titanium	Holes	Length (mm)
BT-319-02	BTT-319-02	2	39
BT-319-03	BTT-319-03	3	55
BT-319-04	BTT-319-04	4	71
BT-319-05	BTT-319-05	5	87
BT-319-06	BTT-319-06	6	103
BT-319-07	BTT-319-07	7	119
BT-319-08	BTT-319-08	8	135
BT-319-09	BTT-319-09	9	151
BT-319-10	BTT-319-10	10	167
BT-319-11	BTT-319-02	11	183
BT-319-12	BTT-319-03	12	199



Reconstruction Plates 3.5mm

Stainless steel	Titanium	Holes	Length (mm)
BT-303-04	BTT-303-04	4	46
BT-303-05	BTT-303-05	5	58
BT-303-06	BTT-303-06	6	70
BT-303-07	BTT-303-07	7	82
BT-303-08	BTT-303-08	8	94
BT-303-09	BTT-303-09	9	106
BT-303-10	BTT-303-10	10	118
BT-303-11	BTT-303-11	11	130
BT-303-12	BTT-303-12	12	142
BT-303-13	BTT-303-13	13	154
BT-303-14	BTT-303-14	14	166
BT-303-15	BTT-303-15	15	178
BT-303-16	BTT-303-16	16	190
BT-303-18	BTT-303-18	18	214
BT-303-20	BTT-303-20	20	238
BT-303-22	BTT-303-22	22	263





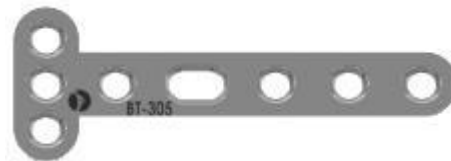
Curved Reconstruction Plates 3.5mm

Stainless steel	Titanium	Holes	Length (mm)
BT-304-06	BTT-304-06	6	70
BT-304-08	BTT-304-08	8	94
BT-304-10	BTT-304-10	10	118
BT-304-12	BTT-304-12	12	142
BT-304-14	BTT-304-14	14	166
BT-304-16	BTT-304-16	16	190
BT-304-18	BTT-304-18	18	214



T-Plates 3.5 mm

Stainless steel	Titanium	in Head	in Shaft	Length (mm)
BT-305-03	BTT-305-03	3	3	50
BT-305-04	BTT-305-04	3	4	67
BT-305-05	BTT-305-05	3	5	75
BT-305-06	BTT-305-06	3	6	90
BT-305-07	BTT-305-07	3	7	101
BT-305-08	BTT-305-08	3	8	112
BT-305-09	BTT-305-09	3	9	123
BT-305-10	BTT-305-10	3	10	140



T-Plates 3.5 mm-Type II

Stainless steel	Titanium	in Head	in Shaft	Length (mm)
BT-325-03	BTT-325-03	4	3	44
BT-325-04	BTT-325-04	4	4	56
BT-325-05	BTT-325-05	4	5	68
BT-325-06	BTT-325-06	4	6	80
BT-325-07	BTT-325-07	4	7	92
BT-325-08	BTT-325-08	4	8	104
BT-325-09	BTT-325-09	4	9	116
BT-325-10	BTT-325-10	4	10	128





DCP T-Plates, oblique 3.5mm

Stainless steel	Titanium	Holes in Head	Holes in Shaft	Length (mm)	
BT-335-013	BTT-335-013	3	3	53	Right
BT-335-023	BTT-335-023	3	3	53	Left
BT-335-014	BTT-335-014	3	4	63	Right
BT-335-024	BTT-335-024	3	4	63	Left
BT-335-015	BTT-335-015	3	5	75	Right
BT-335-025	BTT-335-025	3	5	75	Left
BT-335-016	BTT-335-016	3	6	87	Right
BT-335-026	BTT-335-026	3	6	87	Left
BT-335-017	BTT-335-017	3	7	99	Right
BT-335-027	BTT-335-027	3	7	99	Left
BT-335-018	BTT-335-018	3	8	111	Right
BT-335-028	BTT-335-028	3	8	111	Left
BT-335-019	BTT-335-019	3	9	123	Right
BT-335-029	BTT-335-029	3	9	123	Left
BT-335-310	BTT-335-310	3	10	135	Right
BT-335-410	BTT-335-410	3	10	135	Left



Spoon plates

Stainless steel	Titanium	Shaft	Length (mm)
BT-320-05	BTT-320-05	5	100
BT-320-06	BTT-320-06	6	120





Calcaneal DCP Plates type I

Stainless steel	Titanium	Length (mm)	
BT-310-015	BTT-310-015	50	Right
BT-310-025	BTT-310-025	50	Left
BT-310-016	BTT-310-016	60	Right
BT-310-026	BTT-310-026	60	Left
BT-310-017	BTT-310-017	70	Right
BT-310-027	BTT-310-027	70	Left



Calcaneal plates 3.5 mm type II

Stainless steel	Titanium	hole
BT-346-08	BTT-346-08	8
BT-346-10	BTT-346-10	10
BT-346-13	BTT-346-13	13
BT-346-15	BTT-346-15	15



Calcaneal plates 3.5 mm type III

Stainless steel	Titanium	hole
BT-347-08	BTT-347-08	8
BT-347-12	BTT-347-12	12 small
BT-347-12	BTT-347-12	12 big





Claverleaf plates

Stainless steel	Titanium	hole	Length (mm)
BT-343-03	BTT-343-03	3	88
BT-343-04	BTT-343-04	4	104
BT-343-05	BTT-343-05	5	120
BT-343-06	BTT-343-06	6	136
BT-343-07	BTT-343-07	7	152
BT-343-08	BTT-343-08	8	168
BT-343-10	BTT-343-10	10	200



Calcaneal Y plates 3.5 mm

Stainless steel	Titanium	Length (mm)
BT-344-87	BTT-344-87	87





Superior Anterior clavicle S plates 3.5m

Stainless steel	Titanium	Hole	Length (mm)	
BT-326-016	BTT-326-016	6	94	right
BT-326-026	BTT-326-026	6	94	left
BT-326-017	BTT-326-017	7	110	right
BT-326-027	BTT-326-027	7	110	left
BT-326-018	BTT-326-018	8	120	right
BT-326-028	BTT-326-028	8	120	left



Clavicle Hook Plates 3.5mm

Stainless steel	Titanium	Holes	Hook Depth	
BT-327-014	BTT-327-014	4	12	right
BT-327-024	BTT-327-024	4	12	left
BT-327-034	BTT-327-034	4	15	right
BT-327-044	BTT-327-044	4	15	left
BT-327-054	BTT-327-054	4	18	right
BT-327-064	BTT-327-064	4	18	left
BT-327-015	BTT-327-015	5	12	right
BT-327-025	BTT-327-025	5	12	left
BT-327-035	BTT-327-035	5	15	right
BT-327-045	BTT-327-045	5	15	left
BT-327-055	BTT-327-055	5	18	right
BT-327-065	BTT-327-065	5	18	left
BT-327-016	BTT-327-016	6	15	right
BT-327-026	BTT-327-026	6	15	left
BT-327-036	BTT-327-036	6	18	right
BT-327-046	BTT-327-046	6	18	left
BT-327-017	BTT-327-017	7	15	right
BT-327-027	BTT-327-027	7	15	left
BT-327-037	BTT-327-037	7	18	right
BT-327-047	BTT-327-047	7	18	left





Broad DCP Plates 4.5mm

Stainless steel	Titanium	holes	Length (mm)
BT-313-06	BTT-313-06	6	103
BT-313-07	BTT-313-07	7	119
BT-313-08	BTT-313-08	8	135
BT-313-09	BTT-313-09	9	151
BT-313-10	BTT-313-10	10	167
BT-313-12	BTT-313-12	12	199
BT-313-14	BTT-313-14	14	231
BT-313-16	BTT-313-16	16	263
BT-313-18	BTT-313-18	18	295
BT-313-20	BTT-313-20	20	326
BT-313-22	BTT-313-22	22	358
BT-313-24	BTT-313-24	24	390
BT-313-26	BTT-313-26	26	423



Narrow DCP Plates 4.5mm

Stainless steel	Titanium	holes	Length (mm)
BT-312-02	BTT-312-02	2	39
BT-312-03	BTT-312-03	3	55
BT-312-04	BTT-312-04	4	71
BT-312-05	BTT-312-05	5	87
BT-312-06	BTT-312-06	6	103
BT-312-07	BTT-312-07	7	119
BT-312-08	BTT-312-08	8	135
BT-312-09	BTT-312-09	9	151
BT-312-10	BTT-312-10	10	167
BT-312-11	BTT-312-11	11	183
BT-312-12	BTT-312-12	12	199
BT-312-13	BTT-312-13	13	215
BT-312-14	BTT-312-14	14	231
BT-312-15	BTT-312-15	15	247
BT-312-16	BTT-312-16	16	263
BT-312-18	BTT-312-18	18	295
BT-312-20	BTT-312-20	20	326
BT-312-22	BTT-312-22	22	358
BT-312-24	BTT-312-24	24	390





LC-DCP Broad plates 4.5mm

Stainless steel	Titanium	Holes	Length (mm)
BT-324-06	BTT-324-06	6	106
BT-324-07	BTT-324-07	7	124
BT-324-08	BTT-324-08	8	142
BT-324-09	BTT-324-09	9	160
BT-324-10	BTT-324-10	10	178
BT-324-11	BTT-324-11	11	196
BT-324-12	BTT-324-12	12	214
BT-324-14	BTT-324-14	14	250
BT-324-16	BTT-324-16	16	286
BT-324-18	BTT-324-18	18	322
BT-324-20	BTT-324-20	20	358
BT-324-22	BTT-324-22	22	394



LC-DCP Narrow plates 4.5mm

Stainless steel	Titanium	Holes	Length (mm)
BT-323-02	BTT-323-02	2	34
BT-323-03	BTT-323-03	3	52
BT-323-04	BTT-323-04	4	70
BT-323-05	BTT-323-05	5	88
BT-323-06	BTT-323-06	6	106
BT-323-07	BTT-323-07	7	124
BT-323-08	BTT-323-08	8	142
BT-323-09	BTT-323-09	9	160
BT-323-10	BTT-323-10	10	178
BT-323-11	BTT-323-11	11	196
BT-323-12	BTT-323-12	12	214
BT-323-13	BTT-323-13	13	232
BT-323-14	BTT-323-14	14	250
BT-323-15	BTT-323-15	15	268
BT-323-16	BTT-323-16	16	286
BT-323-18	BTT-323-18	18	323
BT-323-20	BTT-323-20	20	358
BT-323-22	BTT-323-22	22	394





Reconstruction Plates 4.5mm

Stainless steel	Titanium	Holes	Length (mm)
BT-316-03	BTT-316-03	3	45
BT-316-04	BTT-316-04	4	61
BT-316-05	BTT-316-05	5	77
BT-316-06	BTT-316-06	6	93
BT-316-07	BTT-316-07	7	109
BT-316-08	BTT-316-08	8	125
BT-316-09	BTT-316-09	9	141
BT-316-10	BTT-316-10	10	157
BT-316-11	BTT-316-11	11	173
BT-316-12	BTT-316-12	12	189
BT-316-13	BTT-316-13	13	205
BT-316-14	BTT-316-14	14	221
BT-316-15	BTT-316-15	15	237
BT-316-16	BTT-316-16	16	253



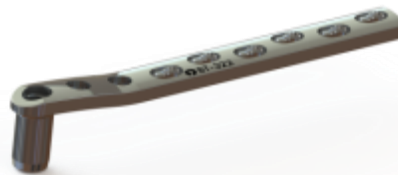
DHS Plates Standard Barrel

Stainless steel	Titanium	Angle		Holes	Length (mm)
		135°	150°		
BT-321-02	BTT-321-02	135°	150°	2	46
BT-321-03	BTT-321-03	135°	150°	3	62
BT-321-04	BTT-321-04	135°	150°	4	78
BT-321-05	BTT-321-05	135°	150°	5	94
BT-321-06	BTT-321-06	135°	150°	6	110
BT-321-08	BTT-321-08	135°	150°	8	142
BT-321-10	BTT-321-10	135°	150°	10	174
BT-321-12	BTT-321-12	135°	150°	12	206
BT-321-14	BTT-321-14	135°	150°	14	238
BT-321-16	BTT-321-16	135°	150°	16	270
BT-321-18	BTT-321-18	135°	150°	18	302
BT-321-20	BTT-321-20	135°	150°	20	333



DCS Plates

Stainless steel	Titanium	Angle	Holes	Shaft
BT-322-06	BTT-322-06	95°	6	114
BT-322-08	BTT-322-08	95°	8	146
BT-322-10	BTT-322-10	95°	10	178
BT-322-12	BTT-322-12	95°	12	210
BT-322-14	BTT-322-14	95°	14	242
BT-322-18	BTT-322-18	95°	18	306
BT-322-20	BTT-322-20	95°	20	338
BT-322-22	BTT-322-22	95°	22	370





T-Plates 4.5mm

Stainless steel	Titanium	Shaft	Length (mm)
BT-314-03	BTT-314-03	3	68
BT-314-04	BTT-314-04	4	84
BT-314-05	BTT-314-05	5	100
BT-314-06	BTT-314-06	6	116
BT-314-08	BTT-314-08	8	148
BT-314-09	BTT-314-09	9	164
BT-314-10	BTT-314-10	10	180
BT-314-11	BTT-314-11	11	196
BT-314-12	BTT-314-12	12	212
BT-314-14	BTT-314-14	14	244



T-Buttress Plates 4.5mm

Stainless steel	Titanium	shaft	Length (mm)
BT-315-04	BTT-315-04	4	80
BT-315-05	BTT-315-05	5	96
BT-315-06	BTT-315-06	6	112
BT-315-07	BTT-315-07	7	128
BT-315-08	BTT-315-08	8	144
BT-315-09	BTT-315-09	9	160
BT-315-10	BTT-315-10	10	176
BT-315-11	BTT-315-11	11	192
BT-315-12	BTT-315-12	12	208





L-Plates 4.5 mm

Stainless steel	Titanium	Holes	Length (mm)	
BT-317-014	BTT-317-014	4	86	Right
BT-317-024	BTT-317-024	4	86	Left
BT-317-015	BTT-317-015	5	101	Right
BT-317-025	BTT-317-025	5	101	Left
BT-317-016	BTT-317-016	6	115	Right
BT-317-026	BTT-317-026	6	115	Left
BT-317-017	BTT-317-017	7	132	Right
BT-317-027	BTT-317-027	7	132	Left
BT-317-018	BTT-317-018	8	148	Right
BT-317-028	BTT-317-028	8	148	Left
BT-317-019	BTT-317-019	9	162	Right
BT-317-029	BTT-317-029	9	162	Left
BT-317-310	BTT-317-310	10	181	Right
BT-317-410	BTT-317-410	10	181	Left
BT-317-311	BTT-317-311	11	196	Right
BT-317-411	BTT-317-411	11	196	Left
BT-317-312	BTT-317-312	12	214	Right
BT-317-412	BTT-317-412	12	214	Left



L-Buttress Plates 4.5mm R/L

Stainless steel	Titanium	Holes	Length (mm)	
BT-318-014	BTT-318-014	4	86	Right
BT-318-024	BTT-318-024	4	86	Left
BT-318-015	BTT-318-015	5	101	Right
BT-318-025	BTT-318-025	5	101	Left
BT-318-016	BTT-318-016	6	115	Right
BT-318-026	BTT-318-026	6	115	Left
BT-318-017	BTT-318-017	7	132	Right
BT-318-027	BTT-318-027	7	132	Left
BT-318-018	BTT-318-018	8	148	Right
BT-318-028	BTT-318-028	8	148	Left
BT-318-019	BTT-318-019	9	162	Right
BT-318-029	BTT-318-029	9	162	Left
BT-318-310	BTT-318-310	10	181	Right
BT-318-410	BTT-318-410	10	181	Left
BT-318-311	BTT-318-311	11	196	Right
BT-318-411	BTT-318-411	11	196	Left
BT-318-312	BTT-318-312	12	214	Right
BT-318-412	BTT-318-412	12	214	Left





Locking Plates 3.5 mm

Stainless steel	Titanium	Holes	Length (mm)
BT-501-02	BTT-501-02	2	33
BT-501-03	BTT-501-03	3	46
BT-501-04	BTT-501-04	4	59
BT-501-05	BTT-501-05	5	72
BT-501-06	BTT-501-06	6	85
BT-501-07	BTT-501-07	7	98
BT-501-08	BTT-501-08	8	111
BT-501-09	BTT-501-09	9	124
BT-501-10	BTT-501-10	10	137
BT-501-11	BTT-501-11	11	150
BT-501-12	BTT-501-12	12	163
BT-501-13	BTT-501-13	13	176
BT-501-14	BTT-501-14	14	189
BT-501-15	BTT-501-15	15	202
BT-501-16	BTT-501-16	16	215
BT-501-18	BTT-501-18	18	241
BT-501-20	BTT-501-20	20	267
BT-501-22	BTT-501-22	22	293



Locking one- third tubular plates 3.5mm

Stainless steel	Titanium	Holes	Length (mm)
BT-502-03	BTT-502-03	3	33
BT-502-04	BTT-502-04	4	45
BT-502-05	BTT-502-05	5	57
BT-502-06	BTT-502-06	6	69
BT-502-07	BTT-502-07	7	81
BT-502-08	BTT-502-08	8	93
BT-502-09	BTT-502-09	9	105
BT-502-10	BTT-502-10	10	117
BT-502-12	BTT-502-12	12	141





Locking Reconstruction Plates 3.5mm

Stainless steel	Titanium	Holes	Length (mm)
BT-503-04	BTT-503-04	4	56
BT-503-05	BTT-503-05	5	70
BT-503-06	BTT-503-06	6	84
BT-503-07	BTT-503-07	7	98
BT-503-08	BTT-503-08	8	112
BT-503-09	BTT-503-09	9	126
BT-503-10	BTT-503-10	10	140
BT-503-11	BTT-503-11	11	154
BT-503-12	BTT-503-12	12	168
BT-503-13	BTT-503-13	13	182
BT-503-14	BTT-503-14	14	196
BT-503-16	BTT-503-16	16	224
BT-503-18	BTT-503-18	18	252
BT-503-20	BTT-503-20	20	280
BT-503-22	BTT-503-22	22	308



Locking Curved Reconstruction Plates 3.5mm

Stainless steel	Titanium	Holes	Length (mm)
BT-504-04	BTT-504-04	4	55
BT-504-06	BTT-504-06	6	82
BT-504-08	BTT-504-08	8	106
BT-504-10	BTT-504-10	10	129
BT-504-12	BTT-504-12	12	149
BT-504-14	BTT-504-14	14	166
BT-504-16	BTT-504-16	16	180
BT-504-18	BTT-504-18	18	190



Locking low profile Reconstruction plates 3.5mm

Stainless steel	Titanium	hole	Length (mm)
BT-533-03	BTT-533-03	3	39
BT-533-04	BTT-533-04	4	52
BT-533-05	BTT-533-05	5	65
BT-533-06	BTT-533-06	6	78
BT-533-07	BTT-533-07	7	91
BT-533-08	BTT-533-08	8	104
BT-533-09	BTT-533-09	9	117
BT-533-10	BTT-533-10	10	130
BT-533-11	BTT-533-11	11	143
BT-533-12	BTT-533-12	12	156
BT-533-13	BTT-533-13	13	169
BT-533-14	BTT-533-14	14	182
BT-533-15	BTT-533-15	15	195
BT-533-16	BTT-533-16	16	208
BT-533-18	BTT-533-18	18	234
BT-533-20	BTT-533-20	20	260





Locking T-Plates 3.5 mm

Stainless steel	Titanium	Holes Head	Holes Shaft	Length (mm)	Width
BT-505-03	BTT-505-03	3	3	50	10
BT-505-04	BTT-505-04	3	4	57	10
BT-505-05	BTT-505-05	3	5	67	10
BT-505-06	BTT-505-06	3	6	77	10
BT-505-07	BTT-505-07	3	7	87	10
BT-505-08	BTT-505-08	3	8	97	10
BT-505-09	BTT-505-09	3	9	107	10
BT-505-10	BTT-505-10	3	10	117	10



Locking T-Plates 3.5 mm - Type II

Stainless steel	Titanium	in Head	in Shaft	Length (mm)
BT-525-03	BTT-525-03	4	3	44
BT-525-04	BTT-525-04	4	4	56
BT-525-05	BTT-525-05	4	5	68
BT-525-06	BTT-525-06	4	6	80
BT-525-07	BTT-525-07	4	7	92
BT-525-08	BTT-525-08	4	8	104
BT-525-09	BTT-525-09	4	9	116
BT-525-10	BTT-525-10	4	10	128



Locking T-Plates, oblique 3.5mm

Stainless steel	Titanium	Holes in Head	Holes in Shaft	Length (mm)	
BT-535-013	BTT-535-013	3	3	53	Right
BT-535-023	BTT-535-023	3	3	53	Left
BT-535-014	BTT-535-014	3	4	65	Right
BT-535-024	BTT-535-024	3	4	65	Left
BT-535-015	BTT-535-015	3	5	77	Right
BT-535-025	BTT-535-025	3	5	77	Left
BT-535-016	BTT-535-016	3	6	89	Right
BT-535-026	BTT-535-026	3	6	89	Left
BT-535-017	BTT-535-017	3	7	114	Right
BT-535-027	BTT-535-027	3	7	114	Left
BT-535-018	BTT-535-018	3	8	126	Right
BT-535-028	BTT-535-028	3	8	126	Left
BT-535-019	BTT-535-019	3	9	138	Right
BT-535-029	BTT-535-029	3	9	138	Left
BT-535-310	BTT-535-310	3	10	150	Right
BT-535-410	BTT-535-410	3	10	150	Left





Locking Calcaneal plates 3.5 mm type I

Stainless steel	Titanium	Length (mm)	
BT-510-015	BTT-510-015	50	Right
BT-510-025	BTT-510-025	50	Left
BT-510-016	BTT-510-016	60	Right
BT-510-026	BTT-510-026	60	Left
BT-510-017	BTT-510-017	70	Right
BT-510-027	BTT-510-027	70	Left



Locking Calcaneal plates 3.5 mm type II

Stainless steel	Titanium	hole	
BT-546-018	BTT-546-018	8	Right
BT-546-028	BTT-546-028	8	Left
BT-546-110	BTT-546-110	10	Right
BT-546-210	BTT-546-210	10	Left
BT-546-113	BTT-546-113	13	Right
BT-546-213	BTT-546-213	13	Left
BT-546-115	BTT-546-115	15	Right
BT-546-215	BTT-546-215	15	Left



Locking Calcaneal plates 3.5 mm type III

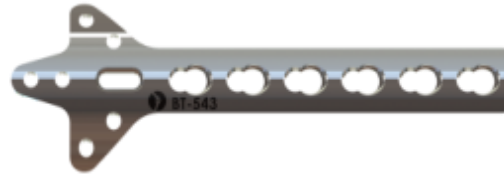
Stainless steel	Titanium	hole	
BT-547-018	BTT-547-018	8	Right
BT-547-028	BTT-547-028	8	Left
BT-547-112	BTT-547-12	12 small	Right
BT-547-212	BTT-547-12	12 small	Left
BT-547-112	BTT-547-112	12 big	Right
BT-547-212	BTT-547-112	12 big	Left





Locking Claverleaf plates

Stainless steel	Titanium	hole	Length (mm)
BT-543-03	BTT-543-03	3	88
BT-543-04	BTT-543-04	4	104
BT-543-05	BTT-543-05	5	120
BT-543-06	BTT-543-06	6	136
BT-543-07	BTT-543-07	7	152
BT-543-08	BTT-543-08	8	168
BT-543-10	BTT-543-10	10	200



Locking Calcaneal Y plates 3.5 mm

Stainless steel	Titanium	Length (mm)
BT-544-87	BTT-544-87	87



Locking Straight Reconstruction Plates 4.5mm

Stainless steel	Titanium	holes	Length (mm)
BT-516-03	BTT-516-03	3	56
BT-516-04	BTT-516-04	4	75
BT-516-05	BTT-516-05	5	94
BT-516-06	BTT-516-06	6	113
BT-516-07	BTT-516-07	7	132
BT-516-08	BTT-516-08	8	151
BT-516-09	BTT-516-09	9	170
BT-516-10	BTT-516-10	10	189
BT-516-11	BTT-516-11	11	208
BT-516-12	BTT-516-12	12	227
BT-516-13	BTT-516-13	13	246
BT-516-14	BTT-516-14	14	265
BT-516-15	BTT-516-15	15	284
BT-516-16	BTT-516-16	16	303





LC-LCP Narrow Plates 4.5mm

Stainless steel	Titanium	holes	Length (mm)
BT-523-02	BTT-523-02	2	44
BT-523-03	BTT-523-03	3	62
BT-523-04	BTT-523-04	4	80
BT-523-05	BTT-523-05	5	98
BT-523-06	BTT-523-06	6	116
BT-523-07	BTT-523-07	7	134
BT-523-08	BTT-523-08	8	152
BT-523-09	BTT-523-09	9	170
BT-523-10	BTT-523-10	10	188
BT-523-11	BTT-523-11	11	206
BT-523-12	BTT-523-12	12	224
BT-523-13	BTT-523-13	13	242
BT-523-14	BTT-523-14	14	260
BT-523-15	BTT-523-15	15	278
BT-523-16	BTT-523-16	16	296
BT-523-18	BTT-523-18	18	332
BT-523-20	BTT-523-20	20	368
BT-523-22	BTT-523-22	22	404



LC-LCP Broad plates 4.5mm

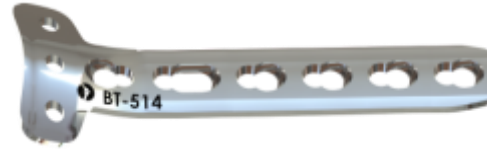
Stainless steel	Titanium	Holes	Length (mm)
BT-524-06	BTT-524-06	6	116
BT-524-07	BTT-524-07	7	134
BT-524-08	BTT-524-08	8	152
BT-524-09	BTT-524-09	9	170
BT-524-10	BTT-524-10	10	188
BT-524-11	BTT-524-11	11	206
BT-524-12	BTT-524-12	12	224
BT-524-14	BTT-524-14	14	260
BT-524-16	BTT-524-16	16	296
BT-524-18	BTT-524-18	18	332
BT-524-20	BTT-524-20	20	368
BT-524-22	BTT-524-22	22	404





Locking T-Plates 4.5mm

Stainless steel	Titanium	Shaft	Length (mm)
BT-514-03	BTT-514-03	3	67
BT-514-04	BTT-514-04	4	83
BT-514-05	BTT-514-05	5	99
BT-514-06	BTT-514-06	6	115
BT-514-08	BTT-514-08	8	147
BT-514-09	BTT-514-09	9	163
BT-514-10	BTT-514-10	10	179
BT-514-11	BTT-514-11	11	195
BT-514-12	BTT-514-12	12	211
BT-514-14	BTT-514-14	14	243



LCP T-Buttress Plates 4.5mm

Stainless steel	Titanium	shaft	Length (mm)
BT-515-04	BTT-515-04	4	80
BT-515-05	BTT-515-05	5	96
BT-515-06	BTT-515-06	6	112
BT-515-07	BTT-515-07	7	128
BT-515-08	BTT-515-08	8	144
BT-515-09	BTT-515-09	9	160
BT-515-10	BTT-515-10	10	176
BT-515-11	BTT-515-11	11	192
BT-515-12	BTT-515-12	12	208





LCP L-Plates 4.5mm R/L

Stainless steel	Titanium	Holes	Length (mm)	
BT-517-014	BTT-517-014	4	86	Right
BT-517-024	BTT-517-024	4	86	Left
BT-517-015	BTT-517-015	5	101	Right
BT-517-025	BTT-517-025	5	101	Left
BT-517-016	BTT-517-016	6	115	Right
BT-517-026	BTT-517-026	6	115	Left
BT-517-017	BTT-517-017	7	132	Right
BT-517-027	BTT-517-027	7	132	Left
BT-517-018	BTT-517-018	8	148	Right
BT-517-028	BTT-517-028	8	148	Left
BT-517-019	BTT-517-019	9	162	Right
BT-517-029	BTT-517-029	9	162	Left
BT-517-310	BTT-517-310	10	181	Right
BT-517-410	BTT-517-410	10	181	Left
BT-517-311	BTT-517-311	11	196	Right
BT-517-411	BTT-517-411	11	196	Left
BT-517-312	BTT-517-312	12	214	Right
BT-517-412	BTT-517-412	12	214	Left



LCP L-Buttress Plates 4.5mm R/L

Stainless steel	Titanium	Holes	Length (mm)	
BT-518-014	BTT-518-014	4	86	Right
BT-518-024	BTT-518-024	4	86	Left
BT-518-015	BTT-518-015	5	101	Right
BT-518-025	BTT-518-025	5	101	Left
BT-518-016	BTT-518-016	6	115	Right
BT-518-026	BTT-518-026	6	115	Left
BT-518-017	BTT-518-017	7	132	Right
BT-518-027	BTT-518-027	7	132	Left
BT-518-018	BTT-518-018	8	148	Right
BT-518-028	BTT-518-028	8	148	Left
BT-518-019	BTT-518-019	9	162	Right
BT-518-029	BTT-518-029	9	162	Left
BT-518-310	BTT-518-310	10	181	Right
BT-518-410	BTT-518-410	10	181	Left
BT-518-311	BTT-518-311	11	196	Right
BT-518-411	BTT-518-411	11	196	Left
BT-518-312	BTT-518-312	12	214	Right
BT-518-412	BTT-518-412	12	214	Left





Locking DHS plates, standard barrel

Stainless steel	Titanium	Angle		Holes	Length (mm)
BT-521-03	BTT-521-03	135°	150°	3	72
BT-521-04	BTT-521-04	135°	150°	4	90
BT-521-05	BTT-521-05	135°	150°	5	108
BT-521-06	BTT-521-06	135°	150°	6	126
BT-521-08	BTT-521-08	135°	150°	8	162
BT-521-10	BTT-521-10	135°	150°	10	198
BT-521-12	BTT-521-12	135°	150°	12	234
BT-521-14	BTT-521-14	135°	150°	14	270
BT-521-16	BTT-521-16	135°	150°	16	306
BT-521-18	BTT-521-18	135°	150°	18	342
BT-521-20	BTT-521-20	135°	150°	20	378



Locking DCS Plates

Stainless steel	Titanium	Angle	Holes	Length (mm)
BT-522-06	BTT-522-06	95°	6	100
BT-522-08	BTT-522-08	95	8	132
BT-522-10	BTT-522-10	95	10	164
BT-522-12	BTT-522-12	95	12	210
BT-522-14	BTT-522-14	95	14	228
BT-522-18	BTT-522-18	95	18	292
BT-522-20	BTT-522-20	95	20	324
BT-522-22	BTT-522-22	95	22	356





Locking Distal Radius Plates Volar 3.5 mm

Stainless steel	Titanium	hole	Length (mm)	
BT-534-013	BTT-534-013	3	52	Right
BT-534-023	BTT-534-023	3	52	Left
BT-534-014	BTT-534-014	4	62	Right
BT-534-024	BTT-534-024	4	62	Left
BT-534-015	BTT-534-015	5	72	Right
BT-534-025	BTT-534-025	5	72	Left
BT-534-016	BTT-534-016	6	82	Right
BT-534-026	BTT-534-026	6	82	Left
BT-534-017	BTT-534-017	7	92	Right
BT-534-027	BTT-534-027	7	92	Left
BT-534-018	BTT-534-018	8	102	Right
BT-534-028	BTT-534-028	8	102	Left



Locking Distal Radius Plates Volar 3.5 mm- Type II

Stainless steel	Titanium	hole	Length (mm)	
BT-571-013	BTT-571-013	3	52	Right
BT-571-023	BTT-571-023	3	52	Left
BT-571-014	BTT-571-014	4	60	Right
BT-571-024	BTT-571-024	4	60	Left
BT-571-015	BTT-571-015	5	68	Right
BT-571-025	BTT-571-025	5	68	Left
BT-571-016	BTT-571-016	6	76	Right
BT-571-026	BTT-571-026	6	76	Left
BT-571-017	BTT-571-017	7	84	Right
BT-571-027	BTT-571-027	7	84	Left
BT-571-018	BTT-571-018	8	92	Right
BT-571-028	BTT-571-028	8	92	Left





Locking Posterolateral Distal Humerus Plates 3.5mm

Stainless steel	Titanium	Holes	Length (mm)	
BT-541-013	BTT-541-013	3	55	right
BT-541-023	BTT-541-023	3	55	left
BT-541-015	BTT-541-015	5	90	right
BT-541-025	BTT-541-025	5	90	left
BT-541-017	BTT-541-017	7	116	right
BT-541-027	BTT-541-027	7	116	left
BT-541-019	BTT-541-019	9	143	right
BT-541-029	BTT-541-029	9	143	left
BT-541-314	BTT-541-314	14	208	right
BT-541-414	BTT-541-414	14	208	left



Locking Extra-Articular Distal Humerus Plate 3.5mm

Stainless steel	Titanium	Holes	Length (mm)	
BT-532-014	BTT-532-014	4	122	right
BT-532-024	BTT-532-024	4	122	left
BT-532-016	BTT-532-016	6	158	right
BT-532-026	BTT-532-026	6	158	left
BT-532-018	BTT-532-018	8	194	right
BT-532-028	BTT-532-028	8	194	left
BT-532-310	BTT-532-310	10	230	right
BT-532-410	BTT-532-410	10	230	left
BT-532-312	BTT-532-312	12	266	right
BT-532-412	BTT-532-412	12	266	left
BT-532-314	BTT-532-314	14	302	right
BT-532-414	BTT-532-414	14	302	left





Locking Medial Distal Humerus Plates 3.5mm

Stainless steel	Titanium	Holes	Length (mm)	
BT-529-015	BTT-529-015	5	90	Right
BT-529-025	BTT-529-025	5	90	Left
BT-529-017	BTT-529-017	7	114	Right
BT-529-027	BTT-529-027	7	114	Left
BT-529-019	BTT-529-019	9	138	Right
BT-529-029	BTT-529-029	9	138	Left
BT-529-311	BTT-529-311	11	163	Right
BT-529-411	BTT-529-411	11	163	Left
BT-529-313	BTT-529-313	13	188	Right
BT-529-413	BTT-529-413	13	188	Left



Locking Posterolateral Distal Humerus Plates 3.5mm with lateral support

Stainless steel	Titanium	Holes	Length (mm)	
BT-554-013	BTT-554-013	3	55	right
BT-554-023	BTT-554-023	3	55	left
BT-554-015	BTT-554-015	5	90	right
BT-554-025	BTT-554-025	5	90	left
BT-554-017	BTT-554-017	7	116	right
BT-554-027	BTT-554-027	7	116	left
BT-554-019	BTT-554-019	9	143	right
BT-554-029	BTT-554-029	9	143	left
BT-554-314	BTT-554-314	14	208	right
BT-554-414	BTT-554-414	14	208	Left



Locking Distal Humerus Plates 3.5mm – Dorsolateral

Stainless steel	Titanium	Holes	Length (mm)
BT-531-06	BTT-531-06	6	84
BT-531-08	BTT-531-08	8	110
BT-531-10	BTT-531-10	10	136
BT-531-12	BTT-531-12	12	162
BT-531-14	BTT-531-14	14	188





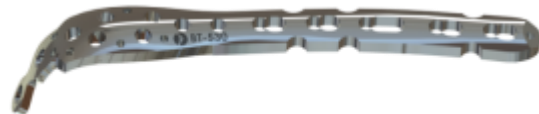
Locking Distal Fibula Plates 3.5mm

Stainless steel	Titanium	Holes	Length (mm)	
BT-556-013	BTT-556-013	3	73	right
BT-556-023	BTT-556-023	3	73	left
BT-556-014	BTT-556-014	4	86	right
BT-556-024	BTT-556-024	4	86	left
BT-556-015	BTT-556-015	5	99	right
BT-556-025	BTT-556-025	5	99	left
BT-556-016	BTT-556-016	6	112	right
BT-556-026	BTT-556-026	6	112	left
BT-556-017	BTT-556-017	7	125	right
BT-556-027	BTT-556-027	7	125	left
BT-556-019	BTT-556-019	9	151	right
BT-556-029	BTT-556-029	9	151	left
BT-556-311	BTT-556-311	11	177	right
BT-556-411	BTT-556-411	11	177	left



Locking Olecranon plates 3.5mm

Stainless steel	Titanium	Holes	Length (mm)	
BT-530-012	BTT-530-012	2	86	right
BT-530-022	BTT-530-022	2	86	left
BT-530-014	BTT-530-014	4	112	right
BT-530-024	BTT-530-024	4	112	left
BT-530-016	BTT-530-016	6	138	right
BT-530-026	BTT-530-026	6	138	left
BT-530-018	BTT-530-018	8	164	right
BT-530-028	BTT-530-028	8	164	left
BT-530-310	BTT-530-310	10	190	right
BT-530-410	BTT-530-410	10	190	left
BT-530-312	BTT-530-312	12	216	right
BT-530-412	BTT-530-412	12	216	left





Locking Proximal Humerus Plates 3.5mm type I

Stainless steel	Titanium	Holes	Length (mm)
BT-528-03	BTT-528-03	3	90
BT-528-05	BTT-528-05	5	115
BT-528-07	BTT-528-07	7	140
BT-528-09	BTT-528-09	9	165
BT-528-11	BTT-528-11	11	190
BT-528-13	BTT-528-13	13	215



Locking Proximal Humerus Plate 3.5 mm type II

Stainless steel	Titanium	Holes	Length (mm)
BT-540-02	BTT-540-02	2	91
BT-540-04	BTT-540-04	4	127
BT-540-06	BTT-540-06	6	163
BT-540-08	BTT-540-08	8	199
BT-540-10	BTT-540-10	10	235
BT-540-12	BTT-540-12	12	271
BT-540-14	BTT-540-14	14	307





Locking Superior Anterior clavicle plates 3.5mm

Stainless steel	Titanium	Hole	Length (mm)	
BT-526-016	BTT-526-016	6	94	right
BT-526-026	BTT-526-026	6	94	left
BT-526-017	BTT-526-017	7	110	right
BT-526-027	BTT-526-027	7	110	left
BT-526-018	BTT-526-018	8	120	right
BT-526-028	BTT-526-028	8	120	left



Locking Clavicle Hook Plates 3.5mm

Stainless steel	Titanium	Hole	Hook Depth	
BT-527-014	BTT-527-014	4	12	right
BT-527-024	BTT-527-024	4	12	left
BT-527-034	BTT-527-034	4	15	right
BT-527-044	BTT-527-044	4	15	left
BT-527-054	BTT-527-054	4	18	right
BT-527-064	BTT-527-064	4	18	left
BT-527-015	BTT-527-015	5	12	right
BT-527-025	BTT-527-025	5	12	left
BT-527-035	BTT-527-035	5	15	right
BT-527-045	BTT-527-045	5	15	left
BT-527-055	BTT-527-055	5	18	right
BT-527-065	BTT-527-065	5	18	left
BT-527-016	BTT-527-016	6	15	right
BT-527-026	BTT-527-026	6	15	left
BT-527-036	BTT-527-036	6	18	right
BT-527-046	BTT-527-046	6	18	left
BT-527-017	BTT-527-017	7	15	right
BT-527-027	BTT-527-027	7	15	left
BT-527-037	BTT-527-037	7	18	right
BT-527-047	BTT-527-047	7	18	left





Locking Medial Distal Tibia Plates 3.5mm

Stainless steel	Titanium	Holes	Length (mm)	
BT-507-014	BTT-507-014	4	116	Right
BT-507-024	BTT-507-024	4	116	Left
BT-507-016	BTT-507-016	6	142	Right
BT-507-026	BTT-507-026	6	142	Left
BT-507-018	BTT-507-018	8	168	Right
BT-507-028	BTT-507-028	8	168	Left
BT-507-310	BTT-507-310	10	194	Right
BT-507-410	BTT-507-410	10	194	Left
BT-507-312	BTT-507-312	12	220	Right
BT-507-412	BTT-507-412	12	220	Left
BT-507-314	BTT-507-314	14	246	Right
BT-507-414	BTT-507-414	14	246	Left



Locking Anterolateral Distal Tibia Plates 3.5mm

Stainless steel	Titanium	Holes	Length (mm)	
BT-506-015	BTT-506-015	5	80	right
BT-506-025	BTT-506-025	5	80	left
BT-506-017	BTT-506-017	7	106	right
BT-506-027	BTT-506-027	7	106	left
BT-506-019	BTT-506-019	9	132	right
BT-506-029	BTT-506-029	9	132	left
BT-506-311	BTT-506-311	11	158	right
BT-506-411	BTT-506-411	11	158	left
BT-506-313	BTT-506-313	13	184	right
BT-506-413	BTT-506-413	13	184	left
BT-506-315	BTT-506-315	15	210	right
BT-506-415	BTT-506-415	15	210	left
BT-506-317	BTT-506-317	17	236	right
BT-506-417	BTT-506-417	17	236	left
BT-506-319	BTT-506-319	19	262	right
BT-506-419	BTT-506-419	19	262	left
BT-506-321	BTT-506-321	21	288	right
BT-506-421	BTT-506-421	21	288	left





Locking Lateral Reconstruction Distal Tibia Plates

Stainless steel	Titanium	Holes	Length (mm)	
BT-557-015	BTT-557-015	5	126.5	right
BT-557-025	BTT-557-025	5	126.5	left
BT-557-017	BTT-557-017	7	162.5	right
BT-557-027	BTT-557-027	7	162.5	left
BT-557-019	BTT-557-019	9	198.5	right
BT-557-029	BTT-557-029	9	198.5	left
BT-557-311	BTT-557-311	11	234.5	right
BT-557-411	BTT-557-411	11	234.5	Left



Locking Lateral Distal Tibia Plates 4.5mm

Stainless steel	Titanium	Holes	Length (mm)	
BT-550-015	BTT-550-015	5	110	right
BT-550-025	BTT-550-025	5	110	left
BT-550-017	BTT-550-017	7	142	right
BT-550-027	BTT-550-027	7	142	left
BT-550-019	BTT-550-019	9	174	right
BT-550-029	BTT-550-029	9	174	left
BT-550-311	BTT-550-311	11	206	right
BT-550-411	BTT-550-411	11	206	left
BT-550-313	BTT-550-313	13	238	right
BT-550-413	BTT-550-413	13	238	left





Locking Proximal Tibia Plates 3.5mm

Stainless steel	Titanium	Holes	Length (mm)	
BT-508-013	BTT-508-013	3	117	right
BT-508-023	BTT-508-023	3	117	left
BT-508-015	BTT-508-015	5	140	right
BT-508-025	BTT-508-025	5	140	left
BT-508-017	BTT-508-017	7	163	right
BT-508-027	BTT-508-027	7	163	left
BT-508-019	BTT-508-019	9	186	right
BT-508-029	BTT-508-029	9	186	left
BT-508-311	BTT-508-311	11	209	right
BT-508-411	BTT-508-411	11	209	left
BT-508-313	BTT-508-313	13	232	right
BT-508-413	BTT-508-413	13	232	left



Locking Medial Proximal Tibia Plates 3.5 mm

Stainless steel	Titanium	Holes	Length (mm)	
BT-537-014	BTT-537-014	4	93	right
BT-537-024	BTT-537-024	4	93	left
BT-537-016	BTT-537-016	6	119	right
BT-537-026	BTT-537-026	6	119	left
BT-537-018	BTT-537-018	8	145	right
BT-537-028	BTT-537-028	8	145	left
BT-537-310	BTT-537-310	10	171	right
BT-537-410	BTT-537-410	10	171	left
BT-537-312	BTT-537-312	12	197	right
BT-537-412	BTT-537-412	12	197	left
BT-537-314	BTT-537-314	14	223	right
BT-537-414	BTT-537-414	14	223	Left





Locking Lateral Proximal Tibia Plates 4.5 mm

Stainless steel	Titanium	Holes	Length (mm)	
BT-509-015	BTT-509-015	5	140	right
BT-509-025	BTT-509-025	5	140	left
BT-509-017	BTT-509-017	7	180	right
BT-509-027	BTT-509-027	7	180	left
BT-509-019	BTT-509-019	9	220	right
BT-509-029	BTT-509-029	9	220	left
BT-509-311	BTT-509-311	11	260	right
BT-509-411	BTT-509-411	11	260	left
BT-509-313	BTT-509-313	13	300	right
BT-509-413	BTT-509-413	13	300	left



Locking Medial Proximal Tibia Plates 4.5 mm

Stainless steel	Titanium	Holes	Length (mm)	
BT-536-014	BTT-536-014	4	106	right
BT-536-024	BTT-536-024	4	106	left
BT-536-016	BTT-536-016	6	142	right
BT-536-026	BTT-536-026	6	142	left
BT-536-018	BTT-536-018	8	178	right
BT-536-028	BTT-536-028	8	178	left
BT-536-310	BTT-536-310	10	214	right
BT-536-410	BTT-536-410	10	214	left
BT-536-312	BTT-536-312	12	250	right
BT-536-412	BTT-536-412	12	250	left
BT-536-314	BTT-536-314	14	286	right
BT-536-414	BTT-536-414	14	286	left





Locking Distal Femur Plates 4.5 mm

Stainless steel	Titanium	Holes	Length (mm)	
BT-511-015	BTT-511-015	5	156	right
BT-511-025	BTT-511-025	5	156	left
BT-511-017	BTT-511-017	7	196	right
BT-511-027	BTT-511-027	7	196	left
BT-511-019	BTT-511-019	9	236	right
BT-511-029	BTT-511-029	9	236	left
BT-511-311	BTT-511-311	11	276	right
BT-511-411	BTT-511-411	11	276	left
BT-511-313	BTT-511-313	13	316	right
BT-511-413	BTT-511-413	13	316	left



Locking Proximal Femur Plates 4.5 mm type I

Stainless steel	Titanium	Holes	Length (mm)	
BT-542-012	BTT-542-012	2	139	right
BT-542-022	BTT-542-022	2	139	left
BT-542-014	BTT-542-014	4	175	right
BT-542-024	BTT-542-024	4	175	left
BT-542-016	BTT-542-016	6	211	right
BT-542-026	BTT-542-026	6	211	left
BT-542-018	BTT-542-018	8	247	right
BT-542-028	BTT-542-028	8	247	left
BT-542-310	BTT-542-310	10	283	right
BT-542-410	BTT-542-410	10	283	left
BT-542-312	BTT-542-312	12	319	right
BT-542-412	BTT-542-412	12	319	left
BT-542-314	BTT-542-314	14	355	right
BT-542-414	BTT-542-414	14	355	left
BT-542-316	BTT-542-316	16	391	right
BT-542-416	BTT-542-416	16	391	left



Locking Proximal Femur Plates 4.5 mm type II

Stainless steel	Titanium	Holes	Length (mm)	
BT-548-015	BTT-548-015	5	149	right
BT-548-025	BTT-548-025	5	149	left
BT-548-017	BTT-548-017	7	185	right
BT-548-027	BTT-548-027	7	185	left
BT-548-019	BTT-548-019	9	221	right
BT-548-029	BTT-548-029	9	221	left
BT-548-311	BTT-548-311	11	257	right
BT-548-411	BTT-548-411	11	257	left
BT-548-313	BTT-548-313	13	293	right
BT-548-413	BTT-548-413	13	293	left





Patella plates

Stainless steel	Titanium	Size
BT-545-101	BTT-545-101	Big
BT-545-102	BTT-545-102	Medium
BT-545-103	BTT-545-103	Small
BT-545-104	BTT-545-104	Extra Small



Locking High Tibia Osteotomy (HTO) Plates 4.5 mm

Titanium	Hole	Length mm
BTT-551-03	3	90
BTT-551-04	4	102
BTT-551-05	5	114



Locking Distal Femur Osteotomy Plates 4.5 mm – Type I

Titanium	Hole	H	Diameter of Head Holes mm	Length mm
BTT-552-7.5	7	7.5	6.4	125
BTT-552-10	7	10	6.4	125
BTT-552-12.5	7	12.5	6.4	125



Locking Distal Femur Osteotomy Plate 4.5 mm – Type II

Titanium	Hole	H	Diameter of Head Holes mm	Length mm
BTT-553-7.5	7	7.5	5.0	125
BTT-553-10	7	10	5.0	125
BTT-553-12.5	7	12.5	5.0	125





Locking Posterior Wall Acetabular Plates 3.5 mm

Stainless steel	Titanium	Length (mm)	
BT-560-01	BTT-560-01	130	Right
BT-560-02	BTT-560-02	130	Left



Locking Distal Clavicle Plates 3.5 mm

Stainless steel	Titanium	Holes	Length (mm)	
BT-572-013	BTT-572-013	3	55	right
BT-572-023	BTT-572-023	3	55	left
BT-572-014	BTT-572-014	4	68	right
BT-572-024	BTT-572-024	4	68	left
BT-572-015	BTT-572-015	5	81	right
BT-572-025	BTT-572-025	5	81	left
BT-572-016	BTT-572-016	6	94	right
BT-572-026	BTT-572-026	6	94	left
BT-572-017	BTT-572-017	7	107	right
BT-572-027	BTT-572-027	7	107	left
BT-572-018	BTT-572-018	8	119	right
BT-572-028	BTT-572-028	8	119	left





Bone Tech Co.Ltd
Medical Instrument Co.

Section 4

Spinal System



Monoaxial Reduction Screws short Arm

P.N	size		P.N	size	
	Diameter (mm)	Length (mm)		Titanium	Diameter (mm)
BTT-163-20	3.5	20	BTT-165-50	5.5	50
BTT-163-25	3.5	25	BTT-165-55	5.5	55
BTT-163-30	3.5	30	BTT-165-60	5.5	60
BTT-163-35	3.5	35	BTT-166-30	6.5	30
BTT-163-40	3.5	40	BTT-166-35	6.5	35
BTT-163-45	3.5	45	BTT-166-40	6.5	40
BTT-163-50	3.5	50	BTT-166-45	6.5	45
BTT-164-20	4.5	20	BTT-166-50	6.5	50
BTT-164-25	4.5	25	BTT-166-55	6.5	55
BTT-164-30	4.5	30	BTT-166-60	6.5	60
BTT-164-35	4.5	35	BTT-167-30	7.5	30
BTT-164-40	4.5	40	BTT-167-35	7.5	35
BTT-164-45	4.5	45	BTT-167-40	7.5	40
BTT-164-50	4.5	50	BTT-167-45	7.5	45
BTT-165-30	5.5	30	BTT-167-50	7.5	50
BTT-165-35	5.5	35	BTT-167-55	7.5	55
BTT-165-40	5.5	40	BTT-167-60	7.5	60
BTT-165-45	5.5	45			



Polyaxial Reduction Screws Short Arm

P.N	size		P.N	size	
	Diameter (mm)	Length (mm)		Titanium	Diameter (mm)
BTT-168-20	3.5	20	BTT-170-50	5.5	50
BTT-168-25	3.5	25	BTT-170-55	5.5	55
BTT-168-30	3.5	30	BTT-170-60	5.5	60
BTT-168-35	3.5	35	BTT-171-30	6.5	30
BTT-168-40	3.5	40	BTT-171-35	6.5	35
BTT-168-45	3.5	45	BTT-171-40	6.5	40
BTT-168-50	3.5	50	BTT-171-45	6.5	45
BTT-169-20	4.5	20	BTT-171-50	6.5	50
BTT-169-25	4.5	25	BTT-171-55	6.5	55
BTT-169-30	4.5	30	BTT-171-60	6.5	60
BTT-169-35	4.5	35	BTT-172-30	7.5	30
BTT-169-40	4.5	40	BTT-172-35	7.5	35
BTT-169-45	4.5	45	BTT-172-40	7.5	40
BTT-169-50	4.5	50	BTT-172-45	7.5	45
BTT-170-30	5.5	30	BTT-172-50	7.5	50
BTT-170-35	5.5	35	BTT-172-55	7.5	55
BTT-170-40	5.5	40	BTT-172-60	7.5	60
BTT-170-45	5.5	45			





Monoaxial Reduction Screws Long Arm

P.N	size		P.N	size	
	Diameter (mm)	Length (mm)		Titanium	Diameter (mm)
BTT-173-20	3.5	20	BTT-175-50	5.5	50
BTT-173-25	3.5	25	BTT-175-55	5.5	55
BTT-173-30	3.5	30	BTT-175-60	5.5	60
BTT-173-35	3.5	35	BTT-176-30	6.5	30
BTT-173-40	3.5	40	BTT-176-35	6.5	35
BTT-173-45	3.5	45	BTT-176-40	6.5	40
BTT-173-50	3.5	50	BTT-176-45	6.5	45
BTT-174-20	4.5	20	BTT-176-50	6.5	50
BTT-174-25	4.5	25	BTT-176-55	6.5	55
BTT-174-30	4.5	30	BTT-176-60	6.5	60
BTT-174-35	4.5	35	BTT-177-30	7.5	30
BTT-174-40	4.5	40	BTT-177-35	7.5	35
BTT-174-45	4.5	45	BTT-177-40	7.5	40
BTT-174-50	4.5	50	BTT-177-45	7.5	45
BTT-175-30	5.5	30	BTT-177-50	7.5	50
BTT-175-35	5.5	35	BTT-177-55	7.5	55
BTT-175-40	5.5	40	BTT-177-60	7.5	60
BTT-175-45	5.5	45			



Polyaxial Reduction Screws Long Arm

P.N	size		P.N	size	
	Diameter (mm)	Length (mm)		Titanium	Diameter (mm)
BTT-178-20	3.5	20	BTT-180-50	5.5	50
BTT-178-25	3.5	25	BTT-180-55	5.5	55
BTT-178-30	3.5	30	BTT-180-60	5.5	60
BTT-178-35	3.5	35	BTT-181-30	6.5	30
BTT-178-40	3.5	40	BTT-181-35	6.5	35
BTT-178-45	3.5	45	BTT-181-40	6.5	40
BTT-178-50	3.5	50	BTT-181-45	6.5	45
BTT-179-20	4.5	20	BTT-181-50	6.5	50
BTT-179-25	4.5	25	BTT-181-55	6.5	55
BTT-179-30	4.5	30	BTT-181-60	6.5	60
BTT-179-35	4.5	35	BTT-182-30	7.5	30
BTT-179-40	4.5	40	BTT-182-35	7.5	35
BTT-179-45	4.5	45	BTT-182-40	7.5	40
BTT-179-50	4.5	50	BTT-182-45	7.5	45
BTT-180-30	5.5	30	BTT-182-50	7.5	50
BTT-180-35	5.5	35	BTT-182-55	7.5	55
BTT-180-40	5.5	40	BTT-182-60	7.5	60
BTT-180-45	5.5	45			





Laminar Hook

Titanium	Height (mm)
BTT-233-4.5	4.5
BTT-233-6.5	6.5



Spinal Set screw

Titanium	Length (mm)
BTT-195-10	10



Spinal Rod 5.5 mm

Titanium	Length (mm)
BTT-196-50	50
BTT-196-75	75
BTT-196-100	100
BTT-196-125	125
BTT-196-150	150
BTT-196-200	200
BTT-196-250	250
BTT-196-300	300
BTT-196-400	400
BTT-196-600	600



Cross Link

Titanium	Height (mm)
BTT-197-50	50
BTT-197-70	70





Minimally Cannulated Invasive Spinal System – Polyaxial Screw

P.N	size		P.N	size	
	Titanium	size		Titanium	size
	Diameter (mm)	Length (mm)		Diameter (mm)	Length (mm)
BTT-261-25	4.5	25	BTT-263-25	6.0	25
BTT-261-30	4.5	30	BTT-263-30	6.0	30
BTT-261-35	4.5	35	BTT-263-35	6.0	35
BTT-261-40	4.5	40	BTT-263-40	6.0	40
BTT-261-45	4.5	45	BTT-263-45	6.0	45
BTT-261-50	4.5	50	BTT-263-50	6.0	50
BTT-261-55	4.5	55	BTT-263-55	6.0	55
BTT-261-60	4.5	60	BTT-263-60	6.0	60
BTT-262-25	5.5	25	BTT-264-25	6.5	25
BTT-262-30	5.5	30	BTT-264-30	6.5	30
BTT-262-35	5.5	35	BTT-264-35	6.5	35
BTT-262-40	5.5	40	BTT-264-40	6.5	40
BTT-262-45	5.5	45	BTT-264-45	6.5	45
BTT-262-50	5.5	50	BTT-264-50	6.5	50
BTT-262-55	5.5	55	BTT-264-55	6.5	55
BTT-262-60	5.5	60	BTT-264-60	6.5	60



Minimally Cannulated Invasive Spinal System – Monoaxial Screw

P.N	size		P.N	size	
	Titanium	size		Titanium	size
	Diameter (mm)	Length (mm)		Diameter (mm)	Length (mm)
BTT-265-25	4.5	25	BTT-267-25	6.0	25
BTT-265-30	4.5	30	BTT-267-30	6.0	30
BTT-265-35	4.5	35	BTT-267-35	6.0	35
BTT-265-40	4.5	40	BTT-267-40	6.0	40
BTT-265-45	4.5	45	BTT-267-45	6.0	45
BTT-265-50	4.5	50	BTT-267-50	6.0	50
BTT-265-55	4.5	55	BTT-267-55	6.0	55
BTT-265-60	4.5	60	BTT-267-60	6.0	60
BTT-266-25	5.5	25	BTT-268-25	6.5	25
BTT-266-30	5.5	30	BTT-268-30	6.5	30
BTT-266-35	5.5	35	BTT-268-35	6.5	35
BTT-266-40	5.5	40	BTT-268-40	6.5	40
BTT-266-45	5.5	45	BTT-268-45	6.5	45
BTT-266-50	5.5	50	BTT-268-50	6.5	50
BTT-266-55	5.5	55	BTT-268-55	6.5	55
BTT-266-60	5.5	60	BTT-268-60	6.5	60





Anterior Cervical Plate

Titanium	Holes	Length (mm)	Titanium	Holes	Length (mm)
BTT-230-422	4	22	BTT-230-650	6	50
BTT-230-425	4	25	BTT-230-653	6	53
BTT-230-427	4	27	BTT-230-847	8	47
BTT-230-430	4	30	BTT-230-850	8	50
BTT-230-432	4	32	BTT-230-853	8	53
BTT-230-435	4	35	BTT-230-856	8	56
BTT-230-635	6	35	BTT-230-859	8	59
BTT-230-638	6	38	BTT-230-862	8	62
BTT-230-641	6	41	BTT-230-865	8	65
BTT-230-644	6	44	BTT-230-868	8	68
BTT-230-647	6	47	BTT-230-871	8	71



Cervical Fixed Screw

P.N	size	
	Diameter (mm)	Length (mm)
BTT-235-10	4.0	10
BTT-235-11	4.0	11
BTT-235-12	4.0	12
BTT-235-13	4.0	13
BTT-235-14	4.0	14
BTT-235-15	4.0	15
BTT-235-16	4.0	16
BTT-235-18	4.0	18
BTT-235-20	4.0	20
BTT-235-22	4.0	22
BTT-235-24	4.0	24



Cervical Modified Screw

P.N	size	
	Diameter (mm)	Length (mm)
BTT-236-10	4.5	10
BTT-236-12	4.5	12
BTT-236-14	4.5	14
BTT-236-16	4.5	16
BTT-236-18	4.5	18
BTT-236-20	4.5	20
BTT-236-22	4.5	22
BTT-236-24	4.5	24





Cervical Polyaxial Pedicle Screw

P.N	size		P.N	size	
Titanium	Diameter (mm)	Length (mm)	Titanium	Diameter (mm)	Length (mm)
BTT-237-10	3.5	10	BTT-238-10	4.0	10
BTT-237-12	3.5	12	BTT-238-12	4.0	12
BTT-237-14	3.5	14	BTT-238-14	4.0	14
BTT-237-16	3.5	16	BTT-238-16	4.0	16
BTT-237-18	3.5	18	BTT-238-18	4.0	18
BTT-237-20	3.5	20	BTT-238-20	4.0	20
BTT-237-22	3.5	22	BTT-238-22	4.0	22
BTT-237-24	3.5	24	BTT-238-24	4.0	24
BTT-237-26	3.5	26	BTT-238-26	4.0	26
BTT-237-28	3.5	28	BTT-238-28	4.0	28
BTT-237-30	3.5	30	BTT-238-30	4.0	30
BTT-237-32	3.5	32	BTT-238-32	4.0	32
BTT-237-34	3.5	34	BTT-238-34	4.0	34



Cervical Transverse Connector

Titanium	Length (mm)
BTT-239-40	40
BTT-239-50	50
BTT-239-60	60
BTT-239-70	70
BTT-239-80	80



Cervical Rod 3.5 mm

Titanium	Length (mm)
BTT-231-50	50
BTT-231-60	60
BTT-231-70	70
BTT-231-80	80
BTT-231-90	90
BTT-231-100	100
BTT-231-150	150
BTT-231-200	200



Cervical Set Screw

Titanium	Length (mm)
BTT-232-6	6





Anterior Cervical Cage

PEEK CF	Height (mm)	Length (mm)
BTP-270-411	4	11
BTP-270-511	5	11
BTP-270-611	6	11
BTP-270-711	7	11
BTP-270-811	8	11
BTP-270-911	9	11



Posterior/Lateral Lumbar Cage – TLIF

PEEK CF	Height (mm)	Length (mm)
BTP-271-828	8	28
BTP-271-1028	10	28
BTP-271-1228	12	28



Posterior/Lateral Lumbar Cage – PLIF

PEEK CF	Height (mm)	Length (mm)
BTP-272-820	8	20
BTP-272-822	8	22
BTP-272-826	8	26
BTP-272-1020	10	20
BTP-272-1022	10	22
BTP-272-1026	10	26
BTP-272-1220	12	20
BTP-272-1222	12	22
BTP-272-1226	12	26





Bone Tech Co.Ltd
Medical Instrument Co.

Section 5

External Fixation



Washers

Stainless steel	Titanium	Diameter (mm)
BT-143-01	BTT-143-01	7.0 mm*, for small screws
BT-143-02	BTT-143-02	13.0 mm*, for large screws



Spiked Washers (Toothed Washers)

Stainless steel	Titanium	Diameter (mm)
BT-145-01	BTT-145-01	7.0 mm*, for small screws
BT-145-02	BTT-145-02	13.0 mm*, for large screws



Single Adjustable Clamp

Stainless steel
BT-144-01



Universal Joint for Two Tubes

Stainless steel	
BT-144-02	For connection of two tubes



Mini Clamp

Stainless steel	
BT-144-03	4.0 mm/2.5 mm



Open Clamp

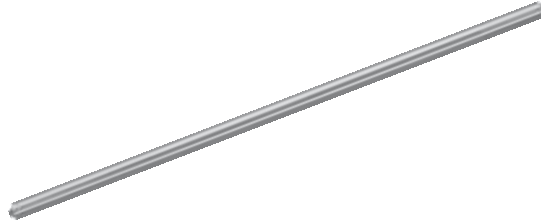
Stainless steel	
BT-144-04	4.0 mm/2.5 mm





External Rod 4.0 mm

Stainless steel	Diameter (mm)	Length (mm)
BT-156-60	4	60
BT-156-80	4	80
BT-156-100	4	100
BT-156-120	4	120
BT-156-140	4	140
BT-156-160	4	160
BT-156-180	4	180
BT-156-200	4	200
BT-156-250	4	250



External Rod 11.0 mm

Stainless steel	Diameter (mm)	Length (mm)
BT-157-100	11	100
BT-157-150	11	150
BT-157-200	11	200
BT-157-250	11	250
BT-157-300	11	300
BT-157-350	11	350
BT-157-400	11	400
BT-157-450	11	450
BT-157-500	11	500
BT-157-550	11	550
BT-157-600	11	600





Drill Bits, for Jacobs chuck

Stainless steel	Diameter (mm)	Total Length (mm)
BT-146-1180	2.5	180
BT-146-2180	2.7	180
BT-146-3180	3.2	180
BT-146-4180	3.5	180
BT-146-5180	4.5	180
BT-146-6180	4.5	180



Drill Bits, quick coupling

Stainless steel	Diameter (mm)	Length (mm)	Stainless steel	Diameter (mm)	Length (mm)
BT-147-1100	1.0		BT-147-3195	3.2	195
BT-147-1101	1.1	60	BT-147-3200	3.2	200
BT-147-1115	1.5		BT-147-3515	3.5	150
BT-147-1117	1.7		BT-147-3530	3.5	300
BT-147-1120	2.0	150	BT-147-4200	4.0	200
BT-147-1121	2.1		BT-147-4250	4.0	250
BT-147-2515	2.5	150	BT-147-4300	4.0	300
BT-147-2150	2.7	150	BT-147-4225	4.2	250
BT-147-2195	2.7	195	BT-147-4320	4.3	200
BT-147-2200	2.7	200	BT-147-4325	4.3	250
BT-147-2800	2.8	200	BT-147-4195	4.5	195
BT-147-3150	3.2	150	BT-147-4500	4.5	200
BT-147-3165	3.2	165			





Drill Bits

Stainless steel	Diameter (mm)	Length (mm)	Stainless steel	Diameter (mm)	Length (mm)
BT-1471-1100	1.0		BT-1471-3195	3.2	195
BT-1471-1101	1.1	60	BT-1471-3200	3.2	200
BT-1471-1115	1.5		BT-1471-3515	3.5	150
BT-1471-1117	1.7		BT-1471-3530	3.5	300
BT-1471-1120	2.0	150	BT-1471-4200	4.0	200
BT-1471-1121	2.1		BT-1471-4250	4.0	250
BT-1471-2515	2.5	150	BT-1471-4300	4.0	300
BT-1471-2150	2.7	150	BT-1471-4225	4.2	250
BT-1471-2195	2.7	195	BT-1471-4320	4.3	200
BT-1471-2200	2.7	200	BT-1471-4325	4.3	250
BT-1471-2800	2.8	200	BT-1471-4195	4.5	195
BT-1471-3150	3.2	150	BT-1471-4500	4.5	200
BT-1471-3165	3.2	165			





Cannulated Drill Bits

Stainless steel	Diameter (mm)	Length (mm)	Stainless steel	Diameter (mm)	Length (mm)
BT-128-1100	1.0		BT-128-3165	3.2	165
BT-128-1101	1.1	60	BT-128-3195	3.2	195
BT-128-1115	1.5		BT-128-3200	3.2	200
BT-128-1117	1.7		BT-128-3515	3.5	150
BT-128-1120	2.0	150	BT-128-3530	3.5	300
BT-128-1121	2.1	150	BT-128-4200	4.0	200
BT-128-2412	2.4	120	BT-128-4250	4.0	250
BT-128-2515	2.5	150	BT-128-4300	4.0	300
BT-128-2150	2.7	150	BT-128-4225	4.2	250
BT-128-2195	2.7	195	BT-128-4320	4.3	200
BT-128-2200	2.7	200	BT-128-4325	4.3	250
BT-128-2800	2.8	200	BT-128-4195	4.5	195
BT-128-3150	3.2	150	BT-128-4500	4.5	200



Guide pin

Stainless steel	Diameter (mm)	Length (mm)	Thread Length (mm)
BT-149-1.0	1	150	15
BT-149-1.2	1.2	150	15
BT-149-1515	1.5	150	15
BT-149-1.5	1.5	210	15
BT-149-153	1.5	300	15
BT-149-2.0	2.0	210	15
BT-149-230	2.0	300	15
BT-149-240	2.0	400	15
BT-149-2.5	2.5	210	15
BT-149-2525	2.5	250	15
BT-149-253	2.5	300	15
BT-149-254	2.5	400	15
BT-149-2510	2.5	1000	15
BT-149-3.0	3.0	210	15
BT-149-330	3.0	300	15
BT-149-340	3.0	400	15





Pin

Stainless steel	Dia (mm)	Length mm	Stainless steel	Dia (mm)	Length mm
BT-148-51	0.5	100	BT-148-225	2.0	250
BT-148-52	0.5	150	BT-148-230	2.0	300
BT-148-53	0.5	200	BT-148-2010	2.0	1000
BT-148-54	0.5	250	BT-148-221	2.2	150
BT-148-61	0.6	100	BT-148-222	2.2	200
BT-148-62	0.6	150	BT-148-223	2.2	250
BT-148-63	0.6	200	BT-148-251	2.5	150
BT-148-64	0.6	250	BT-148-252	2.5	200
BT-148-81	0.8	100	BT-148-253	2.5	250
BT-148-82	0.8	150	BT-148-254	2.5	300
BT-148-83	0.8	200	BT-148-2510	2.5	1000
BT-148-84	0.8	250	BT-148-315	3.0	150
BT-148-110	1.0	100	BT-148-320	3.0	200
BT-148-111	1.0	150	BT-148-325	3.0	250
BT-148-120	1.0	200	BT-148-351	3.5	150
BT-148-121	1.0	250	BT-148-352	3.5	200
BT-148-125	1.25	100	BT-148-353	3.5	250
BT-148-126	1.25	150	BT-148-415	4.0	150
BT-148-127	1.25	200	BT-148-420	4.0	200
BT-148-128	1.25	250	BT-148-425	4.0	250
BT-148-152	1.5	150	BT-148-451	4.5	150
BT-148-153	1.5	200	BT-148-452	4.5	200
BT-148-154	1.5	250	BT-148-453	4.5	250
BT-148-155	1.5	300	BT-148-515	5.0	150
BT-148-161	1.6	150	BT-148-520	5.0	200
BT-148-162	1.6	200	BT-148-525	5.0	250
BT-148-163	1.6	250	BT-148-551	5.5	150
BT-148-181	1.8	150	BT-148-552	5.5	200
BT-148-182	1.8	200	BT-148-553	5.5	250
BT-148-183	1.8	250	BT-148-615	6.0	150
BT-148-215	2.0	150	BT-148-620	6.0	200
BT-148-220	2.0	200	BT-148-625	6.0	250





Schanz Screws

Stainless steel	Length (mm)	Diameter (mm)	Stainless steel	Length (mm)	Diameter (mm)
BT-1515-200	200	1.5	BT-151-200	200	4.5
BT-150-060	60	2.5	BT-151-400	400	4.5
BT-150-100	100	2.5	BT-152-100	100	5
BT-150-150	150	2.5	BT-152-125	125	5
BT-150-200	200	2.5	BT-152-150	150	5
BT-150-250	250	2.5	BT-152-175	175	5
BT-1513-200	200	3.0	BT-152-200	200	5
BT-1535-200	200	3.5	BT-152-250	250	5
BT-1514-200	200	4.0	BT-152-400	400	5
BT-151-080	80	4.5	BT-153-100	100	6
BT-151-100	100	4.5	BT-153-130	130	6
BT-151-125	125	4.5	BT-153-160	160	6
BT-151-150	150	4.5	BT-153-190	190	6
BT-151-175	175	4.5	BT-153-200	200	6





Staple

Stainless steel
BT-154-01



Binding wire

Stainless steel	Titanium	Diameter (mm)
BT-155-106	BTT-155-106	0.6
BT-155-108	BTT-155-108	0.8
BT-155-101	BTT-155-101	1.0
BT-155-112	BTT-155-112	1.2





Bone Tech Co.Ltd
Medical Instrument Co.

Section 6

Cable System



Positioning Pin with thread

Stainless steel	Titanium	
BT-401-3.5	BTT-401-3.5	For LCP 3.5
BT-402-4.5	BTT-402-4.5	For LCP 4.5



Cerclage Positioning Pin

Stainless steel	Titanium	
BT-403-3.5	BTT-403-3.5	For LCP 3.5
BT-404-4.5	BTT-404-4.5	For LCP 4.5



Positioning Pin - Cruciform

Stainless steel	Titanium	
BT-405-5.0	BTT-405-5.0	For VA 5.0



Cerclage Eye

Stainless steel	Titanium	
BT-406-3.5	BTT-406-3.5	For Screws 3.5
BT-407-4.5	BTT-407-4.5	For Screws 4.5



Cerclage Fix

Stainless steel	Titanium	
BT-408-3.5	BTT-408-3.5	For LCP 4.5
BT-409-4.5	BTT-409-4.5	For LCP 5.0



Cerclage Cable Wire with Crimp

Stainless steel	Titanium	Diameter (mm)
BT-410-1.0	BTT-410-1.0	1.0
BT-411-1.7	BTT-411-1.7	1.7





Bone Tech Co.Ltd
Medical Instrument Co.

Section 7

Maxillofacial System



Orbital Rim Plates (Without Bar)

Titanium	Holes	Thickness (mm)	Length (mm)
BTT-240-03	3	0.8	14.6
BTT-240-05	5	0.8	25.6
BTT-240-07	7	0.8	36.6
BTT-240-09	9	0.8	47.6
BTT-240-11	11	0.8	58.6



Adaption (Straight Without Bar) Plates

Titanium	Holes	Thickness (mm)	Length (mm)
BTT-241-04	4	0.8	20.6
BTT-241-06	6	0.8	31.6
BTT-241-08	8	0.8	42.6
BTT-241-10	10	0.8	53.6
BTT-241-12	12	0.8	64.6
BTT-241-14	14	0.8	75.6
BTT-241-16	16	0.8	86.6
BTT-241-18	18	0.8	97.6
BTT-241-20	20	0.8	108.6



Y-Plates

Titanium	Holes	Thickness (mm)	Length (mm)
BTT-242-02	2	0.8	21.3
BTT-242-03	3	0.8	26.7
BTT-242-04	4	0.8	32
BTT-242-05	5	0.8	37.5
BTT-242-06	6	0.8	42.9
BTT-242-07	7	0.8	48.3



Double-Y-Plates

Titanium	Holes	Thickness (mm)	Length (mm)
BTT-243-06	6	0.8	22





Frame Plates

Titanium	Holes	Thickness (mm)	Size (mm)
BTT-244-01	4	0.8	5x10
BTT-244-02	4	0.8	10x10



X-Plates

Titanium	Holes	Thickness (mm)
BTT-245-04	4	0.8



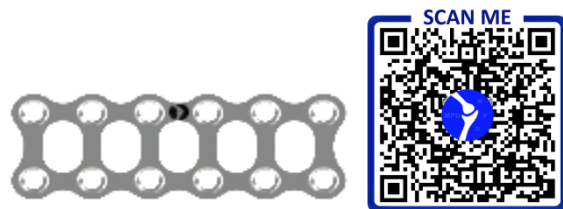
Rectangular Round Hole Plates

Titanium	Holes	Thickness (mm)	Length (mm)
BTT-246-04	4	0.8	10.5
BTT-246-06	6	0.8	16.5
BTT-246-08	8	0.8	22.5
BTT-246-10	10	0.8	28.5
BTT-246-12	12	0.8	34.5



Rectangular Square Hole Plates

Titanium	Holes	Thickness (mm)	Length (mm)
BTT-260-04	4	0.8	9.5
BTT-260-06	6	0.8	16
BTT-260-08	8	0.8	22.5
BTT-260-10	10	0.8	29
BTT-260-12	12	0.8	35.5





L-Plates

Titanium	Holes	Thickness (mm)	Length (mm)	
BTT-247-222	2+2	0.8	14.5	Left
BTT-247-122	2+2	0.8	14.5	Right
BTT-247-223	2+3	0.8	19.5	Left
BTT-247-123	2+3	0.8	19.5	Right
BTT-247-224	2+4	0.8	24.5	Left
BTT-247-124	2+4	0.8	24.5	Right
BTT-247-233	3+3	0.8	19.5	Left
BTT-247-133	3+3	0.8	19.5	Right
BTT-247-234	3+4	0.8	24.5	Left
BTT-247-134	3+4	0.8	24.5	Right
BTT-247-244	4+4	0.8	24.5	Left
BTT-247-144	4+4	0.8	24.5	Right
BTT-247-245	4+5	0.8	29.5	Left
BTT-247-145	4+5	0.8	29.5	Right
BTT-247-246	4+6	0.8	34.5	Left
BTT-247-146	4+6	0.8	34.5	Right



T-Plates

Titanium	Holes	Thickness (mm)	Length (mm)
BTT-249-05	5	0.8	21.5
BTT-249-06	6	0.8	27.5
BTT-249-07	7	0.8	33.5
BTT-249-08	8	0.8	39.5



H-Plates

Titanium	Holes	Thickness (mm)	Length (mm)
BTT-250-07	7	0.8	12
BTT-250-09	9	0.8	16
BTT-250-11	11	0.8	20





Cranial Plate (Burr hole covers)

Titanium	Holes	Thickness (mm)	Length (mm)
BTT-252-13	13	0.8	43



Flat Reconstruction Mesh (Rigid & Malleable)

Titanium	Thickness (mm)	Size (mm)
BTT-254-100	0.8	100x100
BTT-254-120	0.8	120x120
BTT-254-150	0.8	150x150
BTT-254-200	0.8	200x200



Mini Screws Self tapping – Self Drilling

Titanium	Diameter (mm)	Length (mm)
BTT-255-4	1.5	4
BTT-255-5	1.5	5
BTT-255-6	1.5	6
BTT-255-7	1.5	7
BTT-255-8	1.5	8
BTT-255-10	1.5	10
BTT-256-4	2.0	4
BTT-256-5	2.0	5
BTT-256-6	2.0	6
BTT-256-7	2.0	7
BTT-256-8	2.0	8
BTT-256-10	2.0	10
BTT-257-4	2.5	4
BTT-257-5	2.5	5
BTT-257-6	2.5	6
BTT-257-7	2.5	7
BTT-257-8	2.5	8
BTT-257-10	2.5	10
BTT-257-12	2.5	12





Bone Tech Co.Ltd
Medical Instrument Co.

Section 8

Certificate



CERTIFICATE



Reg. Number	17235 - A	Valid From	2018-09-06
First issue date	2018-09-06	Last change date	2018-09-06
Valid Until	2021-09-05	IAF Sector	17

Quality Management System Certificate
ISO 9001:2015

We certify that the Quality Management System of the Organization:

MOBTAKERAN PARSIAN DARMAN

Is in compliance with the standard UNI EN ISO 9001:2015 for the following products/services:

Production and Sales of Orthopaedic and Spine Implants.

Chief Operating Officer
Giampiero Belcredi

The maintaining of the certification is subject to annual surveillance and dependent on the observance of Kiwa Cermet Italia contractual requirements.

This certificate is composed of 1 page.

Kiwa Cermet Italia S.p.A.
Società con socio unico,
soggetta all'attività di direzione e
coordinamento di Kiwa Italia
Holding Srl
Via Cadriano, 23
40057 Granarolo dell'Emilia (BO)
Tel +39.051.459.3.111
Fax +39.051.763.382
E-mail: info@kiwacermet.it
www.kiwacermet.it

MOBTAKERAN PARSIAN DARMAN

Registered Headquarters

- 3 Piece, 27 Block, Shahid Shirodi st, Shahid Abbas Babae st, Airport Payam, Mehrshahr st. Tehran, Iran

Certified Sites

- 3 Piece, 27 Block, Shahid Shirodi st, Shahid Abbas Babae st, Airport Payam, Mehrshahr st. Tehran, Iran



SGQ N° 007A
SGA N° 010D
PRD N° 069B
FSM N° 004I
PRS N° 085C



CERTIFICATE



Reg. Number	17235 - M	Valid From	2018-09-06
First issue date	2018-09-06	Last change date	2018-09-06
Valid until	2021-09-05		

Quality Management System Certificate ISO 13485:2016

We certify that the Quality Management System of the Organization:

MOBTAKERAN PARSIAN DARMAN

Is in compliance with the standard UNI CEI EN ISO 13485:2016 for the following products/services:

Production and Sales of Orthopaedic and Spine Implants.

Chief Operating Officer
Giampiero Belcredi

The maintaining of certification is subject to annual surveillance and dependent upon the observance of Kiwa Cermet Italia contractual requirements.

Refer to quality manual for details of exclusion of UNI CEI EN ISO 13485:2016 requirements.

This certificate is composed of 1 page.

Kiwa Cermet Italia S.p.A.
Società con socio unico,
soggetta all'attività di direzione e
coordinamento di Kiwa Italia
Holding Srl
Via Cadriano, 23
40057 Granarolo dell'Emilia (BO)
Tel +39.051.459.3.111
Fax +39.051.763.382
E-mail: info@kiwacermet.it
www.kiwacermet.it



MOBTAKERAN PARSIAN DARMAN

Registered Headquarters

- 3 Piece, 27 Block, Shahid Shirodi st, Shahid Abbas Babae st, Airport Payam, Mehrshahr st.
Tehran, Iran

Certified Sites

- 3 Piece, 27 Block, Shahid Shirodi st, Shahid Abbas Babae st, Airport Payam, Mehrshahr st.
Tehran, Iran



SGQ N° 007A
SGA N° 010D
PRD N° 069B
FSM N° 004I
PRS N° 089C



لیست مجور های ساخت

- ✓ ایمپلنت استخوانی فک و صورت و جمجمه پلاک اچ شکل
- ✓ ایمپلنت استخوانی فک و صورت و جمجمه پلاک اربیتال بدون میله
- ✓ ایمپلنت استخوانی فک و صورت و جمجمه پلاک ال شکل
- ✓ ایمپلنت استخوانی فک و صورت و جمجمه پلاک انگولار
- ✓ ایمپلنت استخوانی فک و صورت و جمجمه پلاک تی شکل
- ✓ ایمپلنت استخوانی فک و صورت و جمجمه پلاک دبل وای شکل
- ✓ ایمپلنت استخوانی فک و صورت و جمجمه پلاک مستقیم بدون میله
- ✓ ایمپلنت استخوانی فک و صورت و جمجمه پلاک وای شکل
- ✓ ایمپلنت استخوانی فک و صورت و جمجمه میکرو مش
- ✓ پلاک بازسازی
- ✓ پلاک تی تی باترس ال شکل چهارونیم
- ✓ پلاک تی شکل لاکینگ مینی
- ✓ پلاک بازسازی لاکینگ
- ✓ پلاک دیستال هومروس لاکینگ سه و نیم
- ✓ پلاک تی شکل لاکینگ ۴,۵ میلیمتر
- ✓ پلاک لاکینگ تی و تی باترس و ال باترس چهارونیم
- ✓ پلاک لاکینگ دیستال تیبیا لترال چهارونیم
- ✓ پلاک لاکینگ سبک چهارونیم
- ✓ پیچ کانوله
- ✓ پلاک لاکینگ سنگین چهارونیم
- ✓ پلاک لاکینگ فیبولا سه و نیم
- ✓ پلاک کالکانال لاکینگ سه و نیم
- ✓ پلاک لاکینگ دیستال فمور چهارونیم
- ✓ پلاک لاکینگ پروکسیمال تیبیا لترال چهارونیم
- ✓ پلاک لاکینگ پروکسیمال فمور چهارونیم
- ✓ پلاک ترقوه لاکینگ
- ✓ پلاک دیستال رادیوس لاکینگ سه و نیم
- ✓ پیچ نیل اینترلاک
- ✓ پلاک دیستال تیبیا لاکینگ مدیال سه و نیم
- ✓ فیکساتورهای خارجی استخوان کلامپ
- ✓ مینی فرگمنت لاکینگ پیچ
- ✓ نیل اینترلاک ریجید تن ایندرنیل



- ✓ نیل اینترلاک ریم پروکسیمال فمور گاما
- ✓ سیستم سه و نیم غیر لاکینگ پیچ
- ✓ سیستم چهارونیم غیر لاکینگ پیچ
- ✓ سیستم سه و نیم لاکینگ پلاک
- ✓ سیستم چهارونیم لاکینگ پلاک
- ✓ سیستم چهارونیم لاکینگ پیچ
- ✓ سیستم سه و نیم لاکینگ پیچ
- ✓ سیستم سه و نیم غیر لاکینگ پلاک
- ✓ سیستم چهارونیم غیر لاکینگ پلاک
- ✓ پیچ کانوله و پیچ دبل تریدد
- ✓ درپوش انتهای نیل
- ✓ سیستم پلاک DCS
- ✓ سیستم پلاک DHS
- ✓ نیل اینترلاک ریم فمور آنتی گرید
- ✓ نیل فیوژن مچ پا
- ✓ نیل اینترلاک ریم تیبیا
- ✓ واشر
- ✓ سیم ارتوپدی
- ✓ پین - شنز - سرمته
- ✓ استیپل
- ✓ ایمپلنت استخوانی ستون فقرات -راد تیتانیوم
- ✓ ایمپلنت های استخوانی ستون فقرات
- ✓ پلاک استئوتومی لاکینگ چهارونیم
- ✓ پیچ پلاک استئوتومی لاکینگ چهارونیم